



LONDON BOROUGH OF ENFIELD

**AGENDA FOR THE COUNCIL MEETING
TO BE HELD ON WEDNESDAY, 23RD
SEPTEMBER, 2009 AT 7.00 PM**

**THE WORSHIPFUL THE MAYOR
AND COUNCILLORS OF THE
LONDON BOROUGH OF ENFIELD**

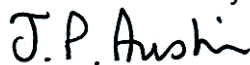
Please Reply to: Stephen Addison
Phone: (020) 8379 4097
Fax: (020) 8379 3177
Textphone: (020) 8379 4419
E-mail: stephen.addison@enfield.gov.uk
My Ref: DST/SA

Date: 15 September 2009

Dear Councillor,

You are summoned to attend the meeting of the Council of the London Borough of Enfield to be held at the Civic Centre, Silver Street, Enfield on Wednesday, 23rd September, 2009 at 7.00 pm for the purpose of transacting the business set out below.

Yours sincerely



Assistant Director, Corporate Governance

1. ELECTION (IF REQUIRED) OF THE CHAIRMAN/DEPUTY CHAIRMAN OF THE MEETING

2. MAYOR'S CHAPLAIN TO GIVE A BLESSING

The Mayor's Chaplain to give a blessing.

3. MAYOR'S ANNOUNCEMENTS

4. MINUTES (Pages 1 - 10)

To approve, as a correct record, the minutes of the Council meeting held on 1 July 2009.

5. APOLOGIES

6. DECLARATION OF INTERESTS (Pages 11 - 12)

Members of the Council are invited to identify any personal or prejudicial interests relevant to items on the agenda. Please refer to the guidance note attached to the agenda.

7. CONSERVATION AREA REVIEW PHASE III ARTICLE 4 DIRECTIONS
(Pages 13 - 30)

To receive the report of the Director of Place Shaping & Enterprise (No. 83) recommending that the permitted development rights be withdrawn from the householders within the extended and the new conservation areas.

A report on the proposed new and extended conservation areas is to be considered at the Cabinet meeting on 16 September 2009 (Report No.77).

8. REVISED HOUSING CAPITAL PROGRAMME 2009/10 (Pages 31 - 34)

To receive the report of the Director of Place Shaping & Enterprise (No. 79A) seeking approval to a revised and extended Housing Capital Programme to take account of the additional funds available to the Council.

The recommendations set out in the attached report are to be considered at the Cabinet meeting on 16 September 2009.

9. SCRUTINY ANNUAL WORK PROGRAMME 2009/10 (Pages 35 - 58)

To receive the report of the Overview and Scrutiny Committee (No. 69B) setting out the annual work programme for the Council's Scrutiny Panels and Overview & Scrutiny Committee (OSC). The Council's Constitution requires that the combined work programmes proposed by each Panel are adopted by Council (as an annual scrutiny work programme), on the recommendation of the Overview & Scrutiny Committee, following consultation with the Cabinet and Corporate Management Board (CMB).

The attached report is to be considered at the Cabinet meeting on 16 September 2009.

10. ENVIRONMENT AND STREET SCENE ADDITIONAL CAPITAL AND REVENUE ALLOCATIONS (Pages 59 - 62)

To receive the report of the Director of Environment & Street Scene (No. 84) proposing the release of additional capital and one off revenue funding to allow improvements to services identified by residents and officers as priority areas.

The recommendations set out in the attached report were endorsed at the Cabinet meeting on 15 July 2009.

11. YOUNG PEOPLES LIFE OPPORTUNITIES COMMISSION FINAL REPORT (TO FOLLOW)

To receive the report of the Director of Finance and Corporate Resources (No. 85) providing Council with a summary of the Commission's findings and recommendations.

12. COUNCILLORS' QUESTION TIME (TIME ALLOWED - 30 MINUTES)
(Pages 63 - 72)

12.1 Urgent Questions (Part 4 - Paragraph 9.2.(b) of Constitution – Page 4-9)

With the permission of the Mayor, questions on urgent issues may be tabled with the proviso of a subsequent written response if the issue requires research or is considered by the Mayor to be minor.

Please note that the Mayor will decide whether a question is urgent or not. The definition of an urgent question is "An issue which could not reasonably have been foreseen or anticipated prior to the deadline for the submission of questions and which needs to be considered before the next meeting of the Council."

A supplementary question is not permitted.

12.2 Councillors' Questions (Part 4 – Paragraph 9.2(a) of Constitution – Page 4 - 8)

The fifteen questions and responses are attached to the agenda.

13. MOTIONS

13.1 In the name of Councillor Lavender

"This Council approves the Council's Recession Action Plan which is attached to this motion (the 'Plan'). It recognizes that this is an evolving plan and invites suggestions as to how it can be developed and implemented. It resolves to seek the views of local businesses through organisations such as EBRA, Chambers of Commerce and the Enfield Enterprise Agency for such purposes. It invites the Place Shaping and Enterprise Scrutiny Panel to review the Plan and to make recommendations to the Cabinet Member for Place Shaping and Enterprise."

13.2 In the name of Councillor Charalambous

"This Council agrees to retain Southgate Town Hall and Palmers Green Library buildings, at the junction of Broomfield Lane and Green Lanes, Palmers Green, London, N13, wholly and exclusively for public use. "

13.3 In the name of Councillor Buckland

“This Council accepts that the Equalities Bill sets out the basis of a modern and confident society in tackling equality and discrimination.

The Council welcomes the changes to the legal framework and additional powers of the Bill. In taking it’s responsibilities seriously, the Council will ensure that greater equality for all is at the heart of all Council policy and actions.”

13.4 In the name of Councillor Cole

“This Council adopts a Cruelty Free Purchasing Policy. This Council and it’s contractors will only use cleaning products that are not tested on animals and have been approved under the BUAV Humane Household Products Standard.”

14. URGENT DECISIONS REQUIRING THE WAIVING OF THE CALL-IN PROCEDURE (PART 4.2 – PARAGRAPH 17.3 – PAGE 4-34)

Council is asked to note the decision taken and the reasons for urgency. The decision set out below was made in accordance with the Council’s Constitution and Scrutiny Rules of Procedure (Paragraph 17.3- relating to the waiving of the requirement to allow a 5-day call-in period):

i. Conservation Area Review Phase III.

Decision:

That the designation of the new conservation areas should have immediate effect upon the decision of Cabinet.

Reason for Urgency:

To prevent owners / developers within conservation areas from exploiting the call-in period to commence works to houses that harms the area’s character.

15. MEMBERSHIP OF COMMITTEES AND PANELS (Pages 73 - 78)

To receive the report of the Director of Finance and Corporate Resources (No. 86) asking Council to determine the constitution and political balance of the committees, joint committees and panels that have been set up for the discharge of the Council’s functions, following the recent change in the political makeup of the Council.

16. MEMBERSHIPS

To confirm the following changes to committee memberships:

i. Place Shaping and Enterprise Scrutiny Panel

To appoint Councillors Goddard (Vice Chair), During, McGowan and Stafford.

ii. Health Scrutiny Panel

Vacancy to replace Councillor Headley.

17. NOMINATIONS TO OUTSIDE BODIES

To confirm the following change to nominations to outside bodies:

i. Enfield Norse Ltd

Councillor Lavender to replace Councillor Hurer.

18. CALLED IN DECISIONS

None received.

19. DATE OF NEXT MEETING

The next meeting of the Council will be held on Wednesday 11 November 2009 at 7.00 p.m. at the Civic Centre.

COUNCIL - 1.7.2009

**MINUTES OF THE MEETING OF THE COUNCIL
HELD ON WEDNESDAY, 1 JULY 2009**

COUNCILLORS**PRESENT**

Eleftherios Savva (Mayor), Pamela Adams (Deputy Mayor), Kate Anolue, Gregory Antoniou, Chaudhury Anwar MBE, Alan Barker, John Boast, Chris Bond, Yasemin Brett, Kris Brown, Jayne Buckland, Lee Chamberlain, Bambos Charalambous, Christopher Cole, Adrian Croshaw, Dogan Delman, Tony Dey, Annette Dreblow, Christiana During, Peter Fallart, Norman Ford, Achilleas Georgiou, Vivien Giladi, Del Goddard, Jonas Hall, Ahmet Hasan, Elaine Hayward, Robert Hayward, Denise Headley, Ruth Hones, Ertan Hurer, Chris Joannides, Eric Jukes, Jon Kaye, Matthew Laban, Henry Lamprecht, Michael Lavender, Dino Lemonides, Donald McGowan, Kieran McGregor, Chris Murphy, Terence Neville OBE JP, Ayfer Orhan, Ahmet Oykenner, Anne-Marie Pearce, Henry Pipe, Martin Prescott, Geoffrey Robinson, Michael Rye, George Savva MBE, Rohini Simbodyal, Edward Smith, Andrew Stafford, Doug Taylor, Glynis Vince and Kate Wilkinson

ABSENT

Andreas Constantinides, Bernadette Lappage, Paul McCannah, Jeff Rodin, Terence Smith and Ann Zinkin

24**MAYOR'S CHAPLAIN TO GIVE A BLESSING**

Father John gave a blessing on the Council.

25**MAYOR'S ANNOUNCEMENTS**

The Mayor made the following announcements:

1. My first two months

Members of the Council I have enjoyed my first two months as Mayor. It has been a pleasure to visit so many voluntary groups and to meet individuals who work in a voluntary capacity as they all contribute so much to the life of the borough. Enfield has such history we should all take the time to discover our borough.

2. Capel Manor Mayor's Day

I am delighted to report that the Annual Mayors' Garden Party at Capel Manor was very successful. It was interesting to learn about the jobs that they teach young people, such as saddle making. On a personal note it was good to see so many colleagues and we had 32 visiting mayors at the Garden Party.

3. John Jackson's Memorial Dinner

COUNCIL - 1.7.2009

My thanks to members of both sides for contributing and attending John Jackson's Memorial Dinner at the Penridge Suite. I know that it meant a lot to Sylvia and Mark Jackson. The evening went very well and I am delighted to say that we raised in the region of £500 - £600 for the Mayor's Charity.

4. Donations to my Charity Appeal

On that note my thanks also to North London Waste for their generous donation of £1000 and to the Octopus Restaurant for their donation of £500.

5. Death of past Mayoress Gloria Price

On a sad note I would like to remind members of the recent passing of former Mayoress Gloria Price. I and many councillors from both sides joined Bill Price at her funeral, which was a celebration of Gloria's life.

Would members please stand for 1 minute's silence in her memory.

6. Artwork from Southgate College

I would ask members to note the artwork displayed in the Council Chamber this evening, from pupils at Southgate College. I attended their awards evening and thought that this artwork would be of interest to you.

**26
MINUTES**

AGREED that the minutes of the Council meeting held on 6 May 2009 be confirmed and signed as a correct record.

**27
APOLOGIES**

Apologies for absence were received from Councillors Constantinides, Lappage, McCannah, Rodin, T Smith and Zinkin.

Apologies for lateness were received from Councillors Bond, Georgiou and Giladi.

**28
DECLARATION OF INTERESTS**

Councillors Brett, Brown, Buckland, During, Hassan, Simbodyal and Taylor declared personal interests in Item No. 18 – Motions, being members of the Unite union.

Councillors Charalambous, Murphy, Orhan, Oykenner and Simon declared personal interests in Item No. 18 – Motions, being members of the GMB union.

29

OPPOSITION BUSINESS - TRANSPARENCY

Councillor Taylor introduced the issues paper prepared by the Labour Group and highlighted that this had been prepared to provoke thought and debate on an important issue and for the Council to look for more and better scrutiny. He felt that it was for Members to drive democratic engagement in the Council. He highlighted that a recent figure indicated that 73% of the public felt that they had no influence over decision making. The aim of this debate was to seek to improve and re-energise residents involvement in what we do.

Councillor Taylor moved and Councillor Charalambous seconded the recommendations set out in the report:

Councillor Rye responded on behalf of the Majority Group and welcomed the sentiment in the paper and in Councillor Taylor's introduction, however he did not recognise in the Council the premise in which the paper had been written. He believed there was a disconnection with the public and European institutions, which was not helped by MEPs not being directly accountable to local people. He felt that it was a scandal the way our European institutions were run and this did not encourage people to come out and vote.

Councillor Rye responded to each of the recommendations detailed in the paper, but felt that the request to provide political assistants to each group was very poorly timed and did not see this being the way forward.

In response to the discussion at the meeting Councillor Charalambous proposed that recommendations (h) and (j) be withdrawn. This was seconded by Councillor Taylor.

Councillor Charalambous summed up the debate on behalf of the Labour Group, he highlighted the need for greater standards in public life and that the Council needed to enhance the role of Councillors to make it more than administration and casework.

In response to the debate Councillor Rye responded to the proposals set out in the paper, he confirmed that recommendations (a), (b), (c), (e) and (f) were either already possible under the existing arrangements or their introduction was currently under consideration.

He confirmed that a pilot was planned to address (k), regarding (l) these groups were already funded/ supported by the Council and these areas would be developed further over the coming months.

Recommendations (h) and (j) had been withdrawn.

The information requested in (g) was already available on the Council's website and (m) was a statement.

COUNCIL - 1.7.2009

Regarding (i) the Council's committees and panels were politically balanced in accordance with statutory requirements and the opposition were granted the chairmanship of two scrutiny panels in accordance with past good practice introduced by the Labour Group.

In response to demands that each proposal in opposition business be put to the vote, the Mayor ruled that under the rules of procedure (13.3 vii) The Majority Group will say if, and how, the matter will be progressed and the Leader had already stated the majority party's response to each proposal.

30

STANDARDS COMMITTEE ANNUAL REPORT 2008/09

Mr G Mills moved and Councillor Dreblow seconded the sixth Annual Report of the London Borough of Enfield's Standards Committee (No. 26), which set out the key issues dealt with during the past year and looked ahead to the Committee's priorities for 2009/10.

NOTED that 2008/09 was the first year of operation under the new Standards Committee Regulations, three new Sub Committees had been created and the Membership of the Committee had been increased from 6 to 9 Members to meet the new requirements placed on the Council.

AGREED to note and endorse the report.

31

SAFEGUARDING ADULTS STRATEGY

Councillor Smith moved and Councillor Lamprecht seconded the report the report of the Director of Health and Adult Social Services (No. 27), proposing a strategy seeking to prevent the abuse of some of the most vulnerable people in our society, as opposed to the current primary focus of responding to abuse once it has happened.

NOTED that the recommendations set out in the report were endorsed at the Cabinet meeting held on 17 June 2009.

AGREED

1. the Safeguarding Adults Strategy which sets out the future direction and priorities of the Safeguarding Adults arrangements in the borough, for which the Council is the lead agency.
2. that the Cabinet member for Adult Social Services or their nominee be a member of the Safeguarding Adults Board.

COUNCIL - 1.7.2009

32

PARKS REFURBISHMENT PROGRAMME 2009-2012

Councillor Rye moved and Councillor Lavender seconded the report of the Director of Place Shaping and Enterprise (No. 17) outlining proposals for the allocation of additional capital investment in parks and open spaces for the period 2009-2012.

NOTED that the recommendations set out in the report were endorsed at the Cabinet meeting held on 17 June 2009.

AGREED

1. The addition of £2.75million to the Parks and Open Spaces Capital Programme over the next three years as outlined in Appendix 1.
2. To note the existing Parks and Open Spaces Capital Programme as outlined in Appendix 2.
3. To delegate authority to the Cabinet Member for Finance and Resources to the release and spend on individual schemes, as they are prepared in more detail.

33

YOUNG PEOPLES LIFE OPPORTUNITIES COMMISSION FINAL UPDATE PRIOR TO THE FULL REPORT

Councillor Prescott moved and Councillor Dreblow seconded the report of the Director of Finance and Corporate Resources (No. 28) providing Council with a final update on the Young Peoples' Life Opportunities Scrutiny Commission's work.

NOTED that a report detailing the Commission's findings and recommendations would be submitted to Council on the 23 September 2009.

34

ENFIELD'S SCRUTINY ANNUAL REPORT 2008/09

Councillor Prescott moved and Councillor Pearce seconded the report of the Overview and Scrutiny Committee (No. 29) detailing the work undertaken by the Council's scrutiny function over the last Municipal Year.

Following debate the recommendations were put to the vote and agreed with the following result:

For: 27
Against: 24
Abstained: 0

AGREED

COUNCIL - 1.7.2009

1. to endorse the Scrutiny's Annual Report 2008/09 for publication;
2. to note the areas identified as future challenges for Enfield's Scrutiny function within the Annual Report, including the implementation of the new powers for scrutiny contained within the Local Government & Public Involvement in Health Act 2007 and Councillor Call for Action.

35

HOUSING REVENUE ACCOUNT - AMENDED RENT INCREASE

Councillor Laban moved and Councillor Hurer seconded the report of the Directors of Place Shaping and Enterprise and Finance and Corporate Resources (No. 19) seeking approval to the amended level of rents to be operative from 6 April 2009.

NOTED that the recommendations set out in the report were endorsed at the Cabinet meeting held on 17 June 2009.

AGREED

1. that the guideline rents for 2009/10 will increase by 3.1% only, in line with amended government guidance. This will result in an average increase of 2.85% for Enfield tenants. This amends the rent increase agreed at Cabinet (11 February 2009) and Council (25 February 2009) whereby guideline rents were increased by 6.2%. This resulted in an average rent increase of 5.74% for tenants for 2009/10 effective from 6 April 2009.
2. that the weekly reduction in actual rents as outlined above (which is an average of £2.30 per tenant for 2009/10) be backdated to 6 April 2009.
3. that the HRA budget is amended to reflect these changes.

36

CREATION OF A PLACE SHAPING AND ENTERPRISE SCRUTINY PANEL

Councillor Rye moved and Councillor Lavender seconded the report of the Director of Finance and Corporate Resources (No. 30) seeking approval to the formation of a new Scrutiny Panel covering the function of Place Shaping and Enterprise.

AGREED

1. that an additional Scrutiny Panel entitled Place Shaping and Enterprise be created to commence meeting as soon as possible during the 2009/10 Municipal Year;
2. the Terms of Reference, remit and membership of the Panel, as detailed in section 4 of the report, and associated changes to the Constitution;

COUNCIL - 1.7.2009

3. that the nominations of the Conservative and Labour Groups to this panel be notified to the Assistant Director of Corporate Governance.
4. the support arrangements for the new Scrutiny Panel, as detailed in section 4.4 of the report.

37

LOCAL GOVERNMENT AND PUBLIC INVOLVEMENT IN HEALTH ACT 2007

Councillor Rye moved and Councillor Boast seconded the report of the Director of Finance and Corporate Resources (No. 31) asking Council to review the options in respect of the new executive arrangements and to give a view as to a preferred option which will be included for consultation as the Council's preferred option for the executive arrangements.

AGREED

1. The Leader and Cabinet model as the preferred 'Council's' option.
2. To adopt the power to remove the leader prior to the expiry of the term of office.
3. the extent and type of consultation detailed in schedules 2 & 3 of the report.
4. that a specially convened meeting of the Council be held to pass a resolution, following the consultation, to take place on the same night as the 11 November 2009 meeting of full council with the first meeting to start at 7.00pm and the second meeting to commence on the rising of the first meeting.

38

PROPOSED CHANGES TO THE COUNCIL'S CONSTITUTION

Councillor Rye moved and Councillor Boast seconded the report of the Director of Finance and Corporate Resources (No. 32) setting out proposed changes to the Council's Constitution agreed by the Constitution Review Group (CRG) at their meeting on 10 June 2009.

AGREED

1. to approve the following changes to the Council's Constitution:
2. that the proposed changes to the Conservation Advisory Group (CAG) membership as detailed in paragraph 3.1.1 be approved.
3. that the proposed new Terms of Reference and change of name to the Tourism & Town Twinning Working Party be approved.

COUNCIL - 1.7.2009

4. to approve an administrative change in the Constitution in respect of the Licensing Committee, by removing the 'title' of Licensing Panel and confirming that all licensing matters will continue to be discharged by the Licensing Committee, including the delegation to the Licensing Sub Committee.

5. to approve to the merger of the Constitution Review Group and the Members Service Working Group, with revised Terms of Reference and to agree that the group be renamed the Governance Working Group.

6. to agree the abolition of the Local Joint Group as a standing body, to be replaced by a steering group of 5 members (3 nominated by the majority and 2 by the opposition parties) who would be available to meet with trade union representatives in the event that a dispute over a corporate issue relating to terms and conditions were to arise which could not be resolved at officer level.

39

COUNCILLORS' QUESTION TIME

1. Urgent Questions (Part 4 - Paragraph 9.2.(b) of Constitution – Page 4-9)
None received.

2. Questions by Councillors

NOTED

1. The ten questions, on the Council's agenda, which received a written reply by the relevant Cabinet Member.

2. The following supplementary questions received for the questions indicated below:

Question 1 from Councillor G Savva to Councillor Kaye, Cabinet Member for Leisure, Culture, Olympics 2012 and Voluntary Sector

"Do you consider that the mobile library stopping for one hour forty five minutes at the Haselbury School is enough?"

Reply from Councillor Kaye:

"The schedules for the mobile library service are frequently looked at, this includes the level of demand for the service at individual sites. The situation at the Haselbury School will be monitored over the coming year and if the level of support is there the number of hours will be revised. I can confirm that the level of usage at the new Fore Street Edmonton Library has increased recently by 50%.

Question 2 from Councillor Boast to Councillor Rye, Leader of the Council:

COUNCIL - 1.7.2009

Are the figures accurate, as I can't reconcile them with Councillor Rodin's reported remarks that they foretold the imminent change of control in Enfield in the next council elections? Was he aware that the ratio between the Labour and Conservative vote was little different from that that had occurred in the 2002 election, which had resulted in a large Conservative majority. He asked if Councillor Rodin had intended to express relief that Labour had not quite suffered the wipeout.

Reply from Councillor Rye:

"The electoral map illustrates the wipe-out of Labour in councils across the country, we have to give credit to Councillor Rodin for his optimism, but the recent poll results and the ratio of voting tells a different story. I feel certain that this administration will be returned again next year."

Question 6 from Councillor R Hayward to Councillor Neville, Cabinet Member for Environment and Street Scene:

Do you have any concerns about the evolving Mayor's Transport Strategy?

Reply from Councillor Neville:

"I think we all ought to note a couple of things, the new approach of Mayor for London, Boris Johnson, in being less prescriptive. Two issues need looking at, the issue of car parking spaces in new developments, the current policies are not working and too few parking spaces are being provided. We do need to do something about this and his Labour colleagues on other London authorities' support this view. Secondly there is more traffic on the local rail network and this is scheduled to increase further over the coming years. With this increase there will be increased delays for motorists at level crossings, which need to be addressed. These crossings and the delays they cause to motorists cause a physical divide across our borough and this needs to be dealt with by Ministers and the Mayor."

**40
MOTIONS**

Councillor Neville moved and Councillor Lamprecht seconded the following motion:

"The Council notes with concern that the 48 hour strike by members of the RMT Union on London Underground between 10 – 12 June 2009 caused considerable inconvenience to many Enfield and other London commuters and travellers at a time when London's economy can ill afford the substantial losses incurred as a result of this action. The Council supports the Mayor of London's desire for a 'no strike' deal with the trade unions in the transport sector and calls upon all parties to negotiate such a deal to bring to an end the history of unnecessary and unreasonable tube and/or bus strikes and other industrial action affecting public transport in London."

COUNCIL - 1.7.2009

Councillor Hurer moved and Councillor Rye seconded a procedural motion that the question be now put. This was put to the vote with the following result:

For: 27
Against: 27
Abstained: 0

With the vote tied the Mayor used his casting vote and the procedural motion was agreed.

The motion was then put to the vote and agreed with the following result:

For: 28
Against: 26
Abstained: 0

**41
MEMBERSHIPS**

AGREED the following change to Committee Memberships:

1. Audit Committee

To appoint Councillor Croshaw to replace Councillor Pipe.

**42
NOMINATIONS TO OUTSIDE BODIES**

AGREED the following change to nominations to outside bodies:

1. Lee Valley Regional Park Authority

To appoint Councilors Rye and Taylor (Deputy) until 30 June 2013.

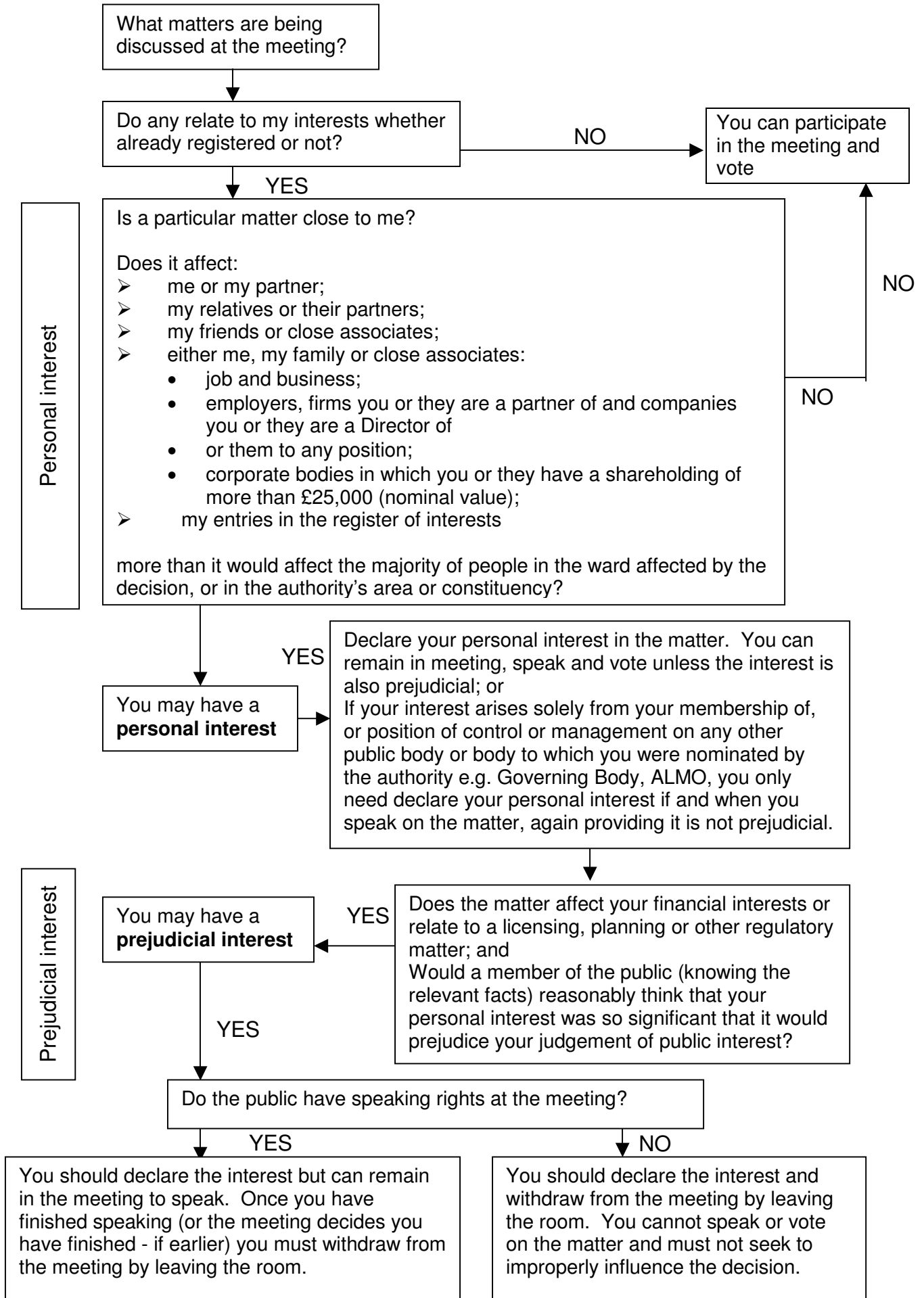
**43
CALLED IN DECISIONS**

None.

**44
DATE OF NEXT MEETING**

NOTED that the next meeting of the Council was to be held Wednesday 23 September 2009 at 7.00 p.m. at the Civic Centre.

DECLARING INTERESTS FLOWCHART - QUESTIONS TO ASK YOURSELF



This page is intentionally left blank

MUNICIPAL YEAR 2009/2010 REPORT NO. **83**

MEETING TITLE AND DATE:

COUNCIL
23 September 2009

REPORT OF:

Director of Place Shaping &
Enterprise

Agenda - Part: 1	Item: 7
Subject: <u>Conservation Area Review Phase III</u> Approval of proposed Article 4 Directions to support revised boundaries for existing conservation areas and one new conservation area.	
Wards: Enfield Lock, Chase, Town, Southgate, Southgate Green.	
Cabinet Members consulted: Cabinet Members for Environment and Street Scene and Place Shaping and Enterprise	

Contact officer and telephone number:

Mike Brown (ext. 3865) E mail: MIKE.BROWN@enfield.gov.uk

1. EXECUTIVE SUMMARY

- 1.1 Cabinet has approved boundary amendments for Church Street Edmonton, Fore Street Edmonton, Clay Hill, Enfield Lock, Forty Hill, Ponders End Flour Mills, Southgate Green, Turkey Street and Winchmore Hill Green Conservation Areas together with approval of a proposed Abbotshall Avenue Conservation Area. This decision has taken immediate effect. Of the extended existing conservation areas, Clay Hill, Enfield Lock, Forty Hill, and Southgate Green involve the inclusion of further small numbers of houses. All properties in the new Abbotshall Avenue Conservation Area are houses.
- 1.2 Householders have permitted development rights allowing them to carry out a range of development works to houses without planning permission. Such development works can have a harmful effect on the character or appearance of the area leading to the erosion of their special interest. The Council has already removed these rights from householders in the original part of the existing conservation areas.
- 1.3 This report recommends that these permitted development rights be withdrawn from these householders within the extended and the new conservation areas. This is achieved by serving Article 4 Directions on identified properties and specifying what works need to be the subject of a planning application (Appendix A). The majority of these permitted development rights can be withdrawn by the Council under its powers to make an Article 4 (2) Direction. The removal of one particular permitted development right, the installation of solar or

photo-voltaic panels on front roof slopes, will need to be approved by the Secretary of State under an Article 4 (1) Direction.

- 1.4 Once the Directions are served they come into immediate force, but require re-affirmation within 6 months. The report therefore further recommends Planning Committee be given the power to consider any representations received and then, as appropriate, to authorise the subsequent confirmation that the Directions be made permanent.

2. RECOMMENDATIONS

- 2.1 That Council approves that the dwelling houses listed within Appendix A of this report be subject to an Article 4(2) Direction under The Town & Country Planning (General Permitted Development) (Amendment) (No. 2) (England) Order 2008, in respect of those Parts/Classes of the Order scheduled against each Conservation Area in Appendix A, removing permitted development rights.
- 2.2 That the Director of Place Shaping and Enterprise undertakes the necessary steps to serve Article 4 Directions on the properties within the conservation areas referred to in Appendix A.
- 2.3 That any representations arising from the serving/publication of the Article 4 Directions be reported to the Planning Committee for consideration and a final formal decision be made as to whether the Directions should be made permanent with regard to any of the affected properties.
- 2.4 That Council delegates the authority to Planning Committee to carry out 2.3 above, in relation to these proposed Directions.
- 2.5 That the Conservation Advisory Group is advised when the Directions are made.
- 2.6 That the Director of Place Shaping and Enterprise be further instructed to apply to the Secretary of State for approval of an Article 4 (1) Direction removing the permitted development right to install solar PV or solar thermal equipment on the principal or side roof slopes of householders allowed under Part 40 of Class A of Schedule 2 of The Town and Country Planning (General Permitted Development) (Amendment) (England) Order 2008 as amended by The Town and Country Planning (General Permitted Development) (Amendment) (No. 2) (England) Order 2008 for all properties shown on the Schedule in Appendix A to this report.
- 2.7 Should the Secretary of State approve the Article 4 (1) Direction, the

Director of Place Shaping and Enterprise be instructed to carry out Recommendations 2.2 – 2.5 above in this regard.

3. BACKGROUND

3.1 Context

- 3.1.1 As part of the Council's Conservation Areas Review Phase I, Character Appraisals and Management Proposals were approved for each of the existing 16 conservation areas in the Borough. One of the Management Proposals for those conservation areas with a predominantly residential character was the making of an Article 4 (2) Direction removing permitted development rights from householders in order to bring minor development works within the planning system. This was approved by full Council in 2006 and has proven a popular measure with the public and an effective tool in helping the Council to 'preserve and enhance' the character or appearance of those conservation areas.
- 3.1.2 Phase II of the Conservation Area Review identified four new conservation areas together with Character Appraisals and Management Proposals for each. As before with Phase I, one of the Management Proposals for those new conservation areas with a predominantly residential character (being Grange Park, Meadway and The Crescent) was the making of Article 4 Directions to remove permitted development rights from householders in order to bring minor development works within the planning system. This was approved by full Council in 2008.
- 3.1.3 Phase III, approved by Cabinet on the 16th September 2009, involves the progressing of two of the Management Proposals for many of the original conservation areas:-
- 1/ the revision of their boundaries to make them more defensible and
 - 2/ the making of Article 4 directions to protect houses within them.
- 3.1.4 As a consequence of the boundary revisions approved under Phase III, four of the conservation areas (being Clay Hill, Enfield Lock, Forty Hill, and Southgate Green Conservation Areas) have enlarged to include a small number of houses. These conservation areas presently have in place successful and popular Article 4 Directions which remove permitted development rights from houses within them (see below). It is proposed to remove the permitted development rights from these further houses now included within the conservation areas.
- 3.1.5 Phase III also included the designation of a new conservation area – the Abbotshall Avenue Conservation Area. In common with all other conservation areas, the Council has approved a Character Appraisal and Management Proposals document for it. One of the approved Management Proposals is that an Article 4 Direction is made that

removes the permitted development rights from houses within the Conservation Area.

3.1.6 Therefore this Report to Council considers a “daughter” document to the above Management Proposals documents. It actions the recommendation in the parent documents to serve the Article 4 Directions to withdraw certain specific permitted development rights.

3.1.7 The revised and new Character Appraisals, Management Proposals and, if approved, this Article 4 Report will form a family of documents that will allow the effective management of the Borough’s conservation areas, to ensure their special character and appearance is preserved and enhanced.

3.2 Article 4(2) Direction

3.2.1 Householders in single-family dwellings have certain ‘permitted development’ (‘PD’) rights under planning legislation (The Town & Country Planning (General Permitted Development) Order 1995 as amended by the Town and Country Planning (General Permitted Development) (Amendment) (No. 2) (England) Order 2008) enabling them to undertake certain works to their properties without the need to formally seek planning permission. Many PD rights are also exercisable within conservation areas. Flats, maisonettes or other properties (commercial) do not enjoy these PD rights.

3.2.2 The implementation of development works, (for example installation of PVCu windows and doors, roofing works and the removal of front gardens and boundary walls to make off-road parking spaces) carried out as PD, can be very detrimental to the appearance and character of conservation areas. The consultant carrying out the Character Appraisals of each of the Borough’s conservation areas has identified such problems within many of our conservation areas. These have been identified within the Management Proposals documents for those areas together with a proposal that Article 4 Directions be made to remove these PD rights from households within them.

3.2.3 The schedules in Appendix A detail the affected addresses within each of the above areas and the specific categories of PD rights that are proposed for removal.

3.2.4 The Council, as Local Planning Authority, is able to exercise the power to make an Article 4(2) Direction to remove most PD rights within conservation areas.

3.2.5 Once a Direction is formally served it takes immediate effect – thus requiring that the specific scheduled works can only be carried out with express planning permission. Any owner is able to make representations to the Council on the serving of the Direction on their property. Any received representations must then be considered, and if the Council is minded to confirm the Direction then this must be

exercised not less than 28 days or more than 6 months of the Direction first being served. A final confirmed Direction is then served.

3.3 Article 4 (1) Direction

- 3.3.1 One category of harmful works – the permitted development right to install solar photo-voltaic or solar thermal panels – is a recent introduction to the General Permitted Development Order. Part 40 of Class A of Schedule 2 of The Town and Country Planning (General Permitted Development) (Amendment) (England) Order 2008 introduced in April 2008 allowed householders to install such equipment. An exception was their installation on principal or side elevation walls and roof slopes on dwelling houses within conservation areas, where they were not permitted.
- 3.3.2 However, The Town and Country Planning (General Permitted Development) (Amendment) (No. 2) (England) Order 2008 introduced in October 2008 removed the restriction on the installation of such equipment on roof slopes in conservation areas. Given the importance of the roof slopes to the character and appearance of our conservation areas it is considered that the uncontrolled installation of solar PV and solar thermal panels within these areas will cause considerable harm to their special interest. It is recommended, therefore, that this permitted development right is removed.
- 3.3.3 However, upon advice from the Department of Communities and Local Government (CLG), who are responsible for the Order, a drafting oversight in the Amendment Orders has not enabled this permitted development right to be withdrawn under an Article 4 (2) Direction. The advice from CLG is that it can only be withdrawn under an Article 4 (1) Direction, which must be approved by the Secretary of State. The above Recommendations 2.6 and 2.7 instruct officers to pursue that course. Should the Article 4 (1) Direction be approved the mechanism for serving and confirming the direction is the same as for Article 4 (2) Directions.
- 3.3.4 The Council is mindful of its responsibility to play the fullest part in reducing energy waste and combating climate change and officers will help applicants for planning permission for such equipment to seek acceptable solutions that achieve those aims while not harming the special architectural or historic interest of the relevant conservation area. Often this can be achieved by the simple relocation of the proposed equipment on rear slopes, not visible from the highway.

3.4 General

- 3.4.1 An Article 4 Direction is registered against a property as a Local Land Charge and is declared on any subsequent searches.
- 3.4.2 Requiring planning applications for hitherto permitted works across these designated (conservation) areas will generate some additional applications to the Development Control Service. The additional applications are exempt from any planning application fees, and will involve some more casework for the Development Control Service. As these are relatively minor proposals, such applications are usually

determined under delegated powers. An assessment has been carried out and it is forecast that the designations and Article 4 Directions together would produce approximately 2 new planning applications p.a. (compared with an average number for the service of 2,864 p.a.). The assessment suggests a similar small increase in workload for planning enforcement. This is statistically insignificant and can be contained within existing resources.

3.4.3 Compensation could be sought from the LPA in those circumstances where a householder could demonstrate loss of value to their property if this is wholly attributable to the making of an Article 4 Direction. This would have to be in a case where planning permission was refused, or granted with conditions, solely because of the Direction. The likelihood of such a claim being received is quite remote, and needs to be considered in the context of the actual PD rights being withdrawn. For example the loss of rights to replace roof material of your choice (as opposed to, say, slate) or refusal to insert plastic windows, are unlikely to substantiate a material loss of value to the property that could support a compensation claim.

4. REASONS FOR RECOMMENDATION

There is no alternative way to secure control of otherwise 'Permitted Development' and safeguard the character of the Borough's Conservation Areas.

5. ALTERNATIVE OPTIONS CONSIDERED

It is evident from the Conservation Area Character Appraisals that the character of these areas is under threat from unsympathetic minor developments. The only way to address this is to remove PD rights and secure a higher standard of work, or even to refuse wholly inappropriate proposals, by requiring planning permission for the works.

6. DIRECTOR OF FINANCE & CORPORATE RESOURCES COMMENTS

6.1 Finance Implications

There is a cost, albeit limited, for the actual legal processing/serving/advertising of the Directions. The additional costs arising from the process are not significant and these will need to be met from within existing Planning budgets.

6.2 Legal Implications

The making of the proposed directions is a non-executive function, so must be referred to full Council. The directions must be advertised and served on affected properties as soon as it is made. It becomes effective upon service but must be ratified within 6 months, at which time any representations received must be formally considered prior to confirmation. It is proposed that the Directions are ratified by Planning Committee, in which case a delegation of authority is necessary as this is currently outside the general terms of reference

of Planning Committee. The withdrawal of permitted development (PD) rights may give rise to a claim for compensation if an application is refused or granted subject to conditions other than mentioned in the Order. Compensation may be claimed for abortive expenditure and loss or damage directly attributable to the loss of PD rights.

6.3 Property Implications

The Council does not own any household properties within the effected areas and will not be affected by the Article 4 Directions.

6.4 Risk Management Implications

Failure to approve the Article 4 Directions will allow uncontrolled development works to be carried out to household properties within the conservation areas. Such works have been demonstrated to be a major cause of the incremental erosion of the special architectural and historic interest of the areas. The purpose of designation of conservation areas is to preserve or enhance their character and appearance and thereby protect that special interest. The Article 4 Directions will strengthen the Council's ability to discharge this statutory duty.

6.5 Health & Safety Implications

None

7. PERFORMANCE MANAGEMENT IMPLICATIONS

7.1 The introduction of Article 4 Directions within Enfield's conservation areas is part of a wider package of management proposals being brought forward for these areas and it thus achieves compliance with current Government advice and local performance indicators for such areas.

7.2 The enlarged existing and new conservation areas and associated Article 4 Directions will add to the work load of the Conservation Team, Development Control and Enviro-crime through the generation of further planning applications of greater complexity and detail requiring more public consultation procedures and the need for more rigorous planning enforcement within these areas. Planning applications under an Article 4 direction do not attract a fee. Nevertheless, it is forecast that the increase in workload is statistically insignificant and can be contained within existing resources.

8. COMMUNITY IMPLICATIONS

Enfield's heritage is of growing importance to local people and its effective protection and beneficial utilisation is a key foundation upon which healthy, engaged and sustainable communities must be built. Once approved, the Article 4 Directions will improve the Council's effectiveness in this important field and thereby support the Place shaping agenda, sustainable communities and social adhesion within Enfield's diverse citizens and groups.

9. PUTTING ENFIELD FIRST

Aim 2 of Putting Enfield First – the Council Business & Improvement Plan 2009/2012 is 'A cleaner, greener sustainable Enfield'. Objective 2e is to:-

'Protect and enhance the character and quality of Enfield's buildings through good urban design, protection of conservation areas and local heritage and improve parks and green spaces'.

The Article 4 Directions will be a major driver for fulfilling this aim. They will form a key element for the delivery of sustainable development within the Borough and an important contributor to successful place shaping.

Background Papers:

The Cabinet Report of the 16 September 2009 that approved the amended existing and new designations and the Management Proposals for the affected conservation areas from which this report and recommended Article 4 Directions flow.

The Character Appraisals and Management Proposals for the amended existing and new conservation areas held by Mike Brown, Team Leader for Conservation X3865.

APPENDIX A
THE ARTICLE 4 DIRECTION SCHEDULES

This page is intentionally left blank

NOTICE TO OWNERS AND OCCUPIERS
OF HOUSES IN CERTAIN CONSERVATION AREAS IN L.B. ENFIELD

TOWN AND COUNTRY PLANNING (GENERAL PERMITTED
DEVELOPMENT) ORDER 1995

DIRECTION MADE UNDER ARTICLE 4(2)

WHEREAS the Council of the London Borough of Enfield, being the appropriate local planning authority within the meaning of Article 4(6) of the Town and Country (General Permitted Development) Order 1995, is satisfied that it is expedient that development of the descriptions set out in the Schedule below should not be carried out on land in part of the **Abbotshall Avenue, Clay Hill, Enfield Lock, Forty Hill and Southgate Green Conservation Areas**, being the land shown outlined in heavy black on the attached plans, unless permission is granted on an application made under Part III of the Town and Country Planning Act 1990.

NOW THEREFORE the said Council, in pursuance of the power conferred on it by Article 4(2) of the Town and Country (General Permitted Development) Order 1995, hereby direct that the permission granted by Article 3 of the said Order shall not apply to development on the said land of the descriptions set out in the Schedule below.

THIS DIRECTION is made under article 4(2) of the said Order and in accordance with article 6(7) and shall remain in force until 23rd March 2010 (being six months from the date of this Direction) and shall then expire, unless the London Borough of Enfield as Local Planning Authority has approved it. Therefore if you have any representations to make on this Direction please set these down in writing and e-mail them to planbrief@enfield.gov.uk or send to the address below, by 22nd October 2009. All representations will be considered by the Council prior to determining if the Direction is to be confirmed. You will be informed within the six-month period as to whether the Direction is to be made permanent.

Abbotshall Avenue Conservation Area

Addresses Affected	Town & Country Planning (General Permitted Development) Order 1995 – as amended: Schedule 2, Part & Classes of Permitted Development being withdrawn
1-17 (odd) Abbotshall Avenue, N14 7JU	<p>Part 1 Development within the Curtilage of a Dwelling House</p> <p><u>Class A:</u> The enlargement, improvement or other alteration of a dwellinghouse where any part of the enlargement improvement or other alteration would front a highway, open space or waterway.</p> <p><u>Class C</u> Any other alteration to the roof of a dwellinghouse where the alteration would be to a roof slope which fronts a highway, open space or waterway</p> <p><u>Class D:</u> The erection or construction of a porch outside any external door of a dwellinghouse where the external door fronts a highway, waterway or open space</p> <p><u>Class E</u></p>

	<p>The provision within the curtilage of the dwellinghouse of</p> <ul style="list-style-type: none"> (a) any building or enclosure, swimming or other pool required for a purpose incidental to the enjoyment of the dwelling house as such, or the maintenance improvement or other alteration of such a building or enclosure (b) a container used for domestic heating purposes for the storage of oil or liquid petroleum gas <p>and where it would front a highway, open space or waterway</p> <p><u>Class F:</u> Development consisting of</p> <ul style="list-style-type: none"> (a) the provision within the curtilage of a dwellinghouse of a hard surface for any purpose incidental to the enjoyment of the dwelling house as such (b) the replacement in whole or in part of such a surface <p>where it would front a highway, open space or waterway</p> <p><u>Class G</u> The installation alteration or replacement of a chimney flue or soil and vent pipe on a dwellinghouse</p> <p><u>Class H:</u> The installation, alteration or replacement of a microwave antenna on a dwellinghouse or within the curtilage of a dwellinghouse where it would front a highway, open space or waterway.</p> <p>Part 2 Minor Operations</p> <p><u>Class A:</u> The erection, construction, maintenance, improvement or alteration of a gate, fence, wall or other means of enclosure where it would front a highway, open space or waterway.</p> <p><u>Class C:</u> The painting of the exterior of any building or work that would front a highway, open space or waterway</p> <p>Part 31</p> <p><u>Class B</u> The demolition of the whole or any part of any gate, fence, wall or other means of enclosure fronting a highway, open space or waterway.</p>
--	--

Clay Hill Conservation Area

<p>Addresses Affected</p>	<p>Town & Country Planning (General Permitted Development) Order 1995 – as amended: Schedule 2, Part & Classes of Permitted Development being withdrawn</p>
----------------------------------	--

<p>The Bungalow 7 Cooks Hole Road Enfield EN2 0UD</p> <p>The Cottage 1 Cooks Hole Road Enfield EN2 0UD</p>	<p>Part 1 Development within the Curtilage of a Dwelling House</p> <p><u>Class A:</u> The enlargement, improvement or other alteration of a dwellinghouse where any part of the enlargement improvement or other alteration would front a highway, open space or waterway.</p> <p><u>Class C</u> Any other alteration to the roof of a dwellinghouse where the alteration would be to a roof slope which fronts a highway, open space or waterway</p> <p><u>Class D:</u> The erection or construction of a porch outside any external door of a dwellinghouse where the external door fronts a highway, waterway or open space</p> <p><u>Class E</u> The provision within the curtilage of the dwellinghouse of</p> <ul style="list-style-type: none"> (c) any building or enclosure, swimming or other pool required for a purpose incidental to the enjoyment of the dwelling house as such, or the maintenance improvement or other alteration of such a building or enclosure (d) a container used for domestic heating purposes for the storage of oil or liquid petroleum gas <p>and where it would front a highway, open space or waterway</p> <p><u>Class F:</u> Development consisting of</p> <ul style="list-style-type: none"> (c) the provision within the curtilage of a dwellinghouse of a hard surface for any purpose incidental to the enjoyment of the dwelling house as such (d) the replacement in whole or in part of such a surface <p>where it would front a highway, open space or waterway</p> <p><u>Class G</u> The installation alteration or replacement of a chimney flue or soil and vent pipe on a dwellinghouse</p> <p><u>Class H:</u> The installation, alteration or replacement of a microwave antenna on a dwellinghouse or within the curtilage of a dwellinghouse where it would front a highway, open space or waterway.</p> <p>Part 2 Minor Operations</p> <p><u>Class A:</u> The erection, construction, maintenance, improvement or alteration of a gate, fence, wall or other means of enclosure where it would front a highway, open space or waterway.</p> <p><u>Class C:</u></p>
--	--

	<p>The painting of the exterior of any building or work that would front a highway, open space or waterway</p> <p>Part 31 <u>Class B</u> The demolition of the whole or any part of any gate, fence, wall or other means of enclosure fronting a highway, open space or waterway.</p>
--	--

Enfield Lock Conservation Area

Addresses Affected	Town & Country Planning (General Permitted Development) Order 1995 – as amended: Schedule 2, Part & Classes of Permitted Development being withdrawn
8 – 22 (even) Harston Drive, EN3 6GH	<p>Part 1 Development within the Curtilage of a Dwelling House</p> <p><u>Class A:</u> The enlargement, improvement or other alteration of a dwellinghouse where any part of the enlargement improvement or other alteration would front a highway, open space or waterway.</p> <p><u>Class C</u> Any other alteration to the roof of a dwellinghouse where the alteration would be to a roof slope which fronts a highway, open space or waterway</p> <p><u>Class F:</u> Development consisting of</p> <ul style="list-style-type: none"> (e) the provision within the curtilage of a dwellinghouse of a hard surface for any purpose incidental to the enjoyment of the dwelling house as such (f) the replacement in whole or in part of such a surface <p>where it would front a highway, open space or waterway</p> <p><u>Class G</u> The installation alteration or replacement of a chimney flue or soil and vent pipe on a dwellinghouse</p> <p><u>Class H:</u> The installation, alteration or replacement of a microwave antenna on a dwellinghouse or within the curtilage of a dwellinghouse where it would front a highway, open space or waterway.</p> <p>Part 2 Minor Operations</p> <p><u>Class A:</u> The erection, construction, maintenance, improvement or alteration of a gate, fence, wall or other means of enclosure where it would front a highway, open space or waterway.</p> <p><u>Class C:</u> The painting of the exterior of any building or work that would front a highway, open space or waterway.</p>

--	--

Forty Hill Conservation Area

Addresses Affected	Town & Country Planning (General Permitted Development) Order 1995 – as amended: Schedule 2, Part & Classes of Permitted Development being withdrawn
Keepers Cottage, Whitewebbs Lane, Enfield, EN2 9HJ	<p>Part 1 Development within the Curtilage of a Dwelling House</p> <p><u>Class A:</u> The enlargement, improvement or other alteration of a dwellinghouse where any part of the enlargement improvement or other alteration would front a highway, open space or waterway.</p> <p><u>Class C</u> Any other alteration to the roof of a dwellinghouse where the alteration would be to a roof slope which fronts a highway, open space or waterway</p> <p><u>Class D:</u> The erection or construction of a porch outside any external door of a dwellinghouse where the external door fronts a highway, waterway or open space</p> <p><u>Class E</u> The provision within the curtilage of the dwellinghouse of</p> <ul style="list-style-type: none"> (e) any building or enclosure, swimming or other pool required for a purpose incidental to the enjoyment of the dwelling house as such, or the maintenance improvement or other alteration of such a building or enclosure (f) a container used for domestic heating purposes for the storage of oil or liquid petroleum gas <p>and where it would front a highway, open space or waterway</p> <p><u>Class F:</u> Development consisting of</p> <ul style="list-style-type: none"> (g) the provision within the curtilage of a dwellinghouse of a hard surface for any purpose incidental to the enjoyment of the dwelling house as such (h) the replacement in whole or in part of such a surface <p>where it would front a highway, open space or waterway</p> <p><u>Class G</u> The installation alteration or replacement of a chimney flue or soil and vent pipe on a dwellinghouse</p> <p><u>Class H:</u> The installation, alteration or replacement of a microwave antenna on a dwellinghouse or within the curtilage of a dwellinghouse where it would front a</p>

	<p>highway, open space or waterway.</p> <p>Part 2 Minor Operations</p> <p><u>Class A:</u> The erection, construction, maintenance, improvement or alteration of a gate, fence, wall or other means of enclosure where it would front a highway, open space or waterway.</p> <p><u>Class C:</u> The painting of the exterior of any building or work that would front a highway, open space or waterway</p> <p>Part 31</p> <p><u>Class B</u> The demolition of the whole or any part of any gate, fence, wall or other means of enclosure fronting a highway, open space or waterway.</p>
--	--

Southgate Green Conservation Area

<p>Addresses Affected</p>	<p>Town & Country Planning (General Permitted Development) Order 1995 – as amended: Schedule 2, Part & Classes of Permitted Development being withdrawn</p>
<p>1-21 (odd) Cannon Road, N14 7HE</p>	<p>Part 1 Development within the Curtilage of a Dwelling House</p> <p><u>Class A:</u> The enlargement, improvement or other alteration of a dwellinghouse where any part of the enlargement improvement or other alteration would front a highway, open space or waterway.</p> <p><u>Class C</u> Any other alteration to the roof of a dwellinghouse where the alteration would be to a roof slope which fronts a highway, open space or waterway</p> <p><u>Class D:</u> The erection or construction of a porch outside any external door of a dwellinghouse where the external door fronts a highway, waterway or open space</p> <p><u>Class E</u> The provision within the curtilage of the dwellinghouse of</p> <ul style="list-style-type: none"> (g) any building or enclosure, swimming or other pool required for a purpose incidental to the enjoyment of the dwelling house as such, or the maintenance improvement or other alteration of such a building or enclosure (h) a container used for domestic heating purposes for the storage of oil or liquid petroleum gas <p>and where it would front a highway, open space or waterway</p> <p><u>Class F:</u> Development consisting of</p> <ul style="list-style-type: none"> (i) the provision within the curtilage of a

	<p>dwellinghouse of a hard surface for any purpose incidental to the enjoyment of the dwelling house as such</p> <p>(j) the replacement in whole or in part of such a surface where it would front a highway, open space or waterway</p> <p><u>Class G</u> The installation alteration or replacement of a chimney flue or soil and vent pipe on a dwellinghouse</p> <p><u>Class H:</u> The installation, alteration or replacement of a microwave antenna on a dwellinghouse or within the curtilage of a dwellinghouse where it would front a highway, open space or waterway.</p> <p>Part 2 Minor Operations</p> <p><u>Class A:</u> The erection, construction, maintenance, improvement or alteration of a gate, fence, wall or other means of enclosure where it would front a highway, open space or waterway.</p> <p><u>Class C:</u> The painting of the exterior of any building or work that would front a highway, open space or waterway</p> <p>Part 31</p> <p><u>Class B</u> The demolition of the whole or any part of any gate, fence, wall or other means of enclosure fronting a highway, open space or waterway.</p>
--	---

STATEMENT OF EFFECT OF THE PROPOSED ARTICLE 4(2) DIRECTION

The proposed Article 4(2) direction will have the effect of restricting development normally permitted by the above parts of the Town and Country Planning (General Permitted Development) Order 1995 as amended and making it the subject of a specific planning application.

The development specifically restricted by the Direction is as set down in the above schedule, specifying the relevant classes of development and the relevant properties affected.

A copy of the duly sealed Direction, statement of the affect of the Direction, and a plan of the area and properties included within the Direction may be inspected between the hours of 08.30 and 17.00, Monday to Friday, at the following address:

L. B. Enfield,
Environment Direct
B Block. Civic Centre
Silver Street
Enfield EN1 3XE

This page is intentionally left blank

MUNICIPAL YEAR 2009/2010 REPORT NO. **79A**

MEETING TITLE AND DATE:

Cabinet - 16.9.09
Council – 23.9.09

REPORT OF:

Director of Place Shaping
& Enterprise

Contact officer and telephone number:
Darren Welsh, Assistant Director
Strategic Housing, Communities and Enterprise
Telephone: 0208 379 4250
E mail: Darren.Welsh@enfield.gov.uk

Agenda – Part: 1	Item: 8
Subject: Revised Housing Capital Programme 2009/10	
Wards: All	
Cabinet Member consulted: Councillor Matthew Laban and Councillor Ertan Hurer	

1. EXECUTIVE SUMMARY

- 1.1 Following the award of two stars on publication of the Enfield Homes inspection report in July 2009, the Homes and Communities Agency has now confirmed that the Council will receive £14.5M in 2009/10, £34M in 2010/11 to support its Decent Homes' Programme work, along with £1.5M made available through the Social Housing Energy Saving Programme. This totals £50M over the first two years of Enfield Homes Decent Homes Programme.
- 1.2 The purpose of this report is to ask Cabinet to agree the proposed revised Housing Capital Programme to take account of the additional funds available and to ask Cabinet to recommend the extended capital programme to Council.
- 1.3 A detailed report detailing the delivery strategy of the programme will be submitted to the October Cabinet meeting.

2. RECOMMENDATIONS

- 2.1 That the Council is recommended to approve the revised Housing Capital Programme for 2009/10.
- 2.2 That where the schemes have not already been tendered, they are, with the tender acceptance reports subject to sign off by the Lead Member for Housing and Community Safety.

3. DETAIL

- 3.1 The Cabinet in July 2009 previously approved a Housing Major Works Programme of £22.299M based upon existing Council resources. (including £900k leaseholder income).

- 3.2 The current programme is based on the minimum work required had Enfield Homes been unsuccessful at achieving two stars in the 2009 Audit Commission inspection.
- 3.3 £9.063M (41%) of the budgeted current programme of £22.299M was allocated to Decent Homes' Works which includes external works, internal works (kitchens and bathrooms) heating, windows and security (door entry systems).
- 3.4 The award of two stars to Enfield Homes following the 2009 Audit Commission inspection unlocks potential additional government resources of £137M over five years to invest in the Council's housing stock.
- 3.5 £14.5M of this additional government funding has now been confirmed for 2009/10, with a further £34M confirmed for 2010/11 along with £1.5M made available through the Social Housing Energy Saving Programme [SHESP]. The remaining £87M is subject to the next government comprehensive spending review.
- 3.6 The investment criteria for prioritising expenditure on the Council's housing stock are set out in the Council's Housing Asset Management Plan and have been subject to extensive consultation with residents.
- 3.7 The scope of work included within the programme includes major works to estates, upgrading kitchens, bathrooms, windows and heating (Decent Homes); external works; door entry systems (Security); structural repairs; boiler replacement, lift modernisation, and environmental improvements.

4. ALTERNATIVE OPTIONS CONSIDERED

The Council is committed to spending the additional government resources to deliver the Decent Homes Programme.

5. REASONS FOR RECOMMENDATIONS

To ensure that the housing capital programme is delivered in 2009/2010.

6. COMMENTS OF THE DIRECTOR OF FINANCE AND CORPORATE RESOURCES AND OTHER DEPARTMENTS

6.1 Financial Implications

This report recommends that the 2009/10 Capital Programme be increased from £22.299m to £33m. This will be funded by the Decent Homes Allocation of £14.5m, £0.5m from the SHESP and £18m of existing resources.

The original Capital Programme for 2009-10 proposed using £22m of capital resources; however it is now planned that £4m of this will be retained as capital reserves and only £18m will be used in 2009-10.

The original capital programme would have used all available reserves by the end of 2009/10 but given the size of the programme it is prudent to retain a reserve.

It should be stressed that there is no guarantee of the level of resources after 2010/11. The council funding is made up of the Major repairs allowance (MRA) paid through the subsidy system and supported capital expenditure (SCE). Supported capital expenditure is only agreed for 1 further year. Given the national review of housing finance there could also be changes to the major repairs allowance.

The remainder of the funding beyond 2010/11 is also subject to the comprehensive spending review so it is not possible to predict with certainty the level of funding in future years. The programme is therefore based on the best available information and will be subject to change depending on the resources available.

The table below sets out the potential resources (confirmed for the first two years only) over the medium term.

	2009/10	2010/11	2011/12	2012/13	2013/14
	£m	£m	£m	£m	£m
Decent Homes funding	14.5	34.0	29.0	29.0	29.0
SHESP	0.5	1.0			
MRA	9.0	9.0	9.0	9.0	9.0
SCE	5.0	5.0	5.0	5.0	0
Other resources *	4.0				
Total	33.0	49.0	43.0	43.0	38.0

* Other resources include capital receipts, grant income and leaseholder income.

In addition there will be £4m capital reserves and any potential receipts generated from future disposals.

Enfield Homes will have to fully spend its Decent Homes allocations of £14.5m in 2009/10 and £34.0m in 2010/11. The Homes and Communities Agency (HCA) has indicated that the Decent Homes budget is under severe pressure, and any failure to utilise the resources allocated to us could potentially result in loss of funding. At £33.0m the overall programme will be three times the size of the programme for 2007/08.

The funding for the Decent Homes element in 2009/10 programme has been reduced by the HCA from a total of £25.0m to £14.5m, with £9.0m moved to 2010/11 and £1.5m now coming from SHESP.

6.2 Legal Implications

Section 2 of the Local Government Act 2000 provides that local authorities have power to do anything they consider likely to promote or improve the social, economic or environmental well being of their area or the persons resident therein. Therefore the Council has a discretionary power to pursue a course of action if it considered it likely to have social, economic or environmental advantages in the area. Members need to be satisfied that the above proposals concur with this legislation.

The Council must ensure that in the tendering of any works/services/goods required under this report that such is procured in compliance with the Councils Constitution, in particular Contract Procedure Rules. The Council must also ensure value for money in accordance with the Best Value principles under the Local Government Act 1999 and that legal agreements are in a form approved by the Borough Solicitor.

6.3 Property Implications

There are no specific property implications.

7. RISK MANAGEMENT IMPLICATIONS

It is important for the Council to commit to and deliver the additional resources made available by the government in order to ensure future funding.

As included in the financial implications above the level of funding remains an area of risk since funding is only confirmed for 2009/10 and 2010/11.

8. PERFORMANCE MANAGEMENT IMPLICATIONS

Adopting these recommendations will strengthen the Council's ability to achieve the Decent Homes Standard in a timely manner.

9. PUTTING ENFIELD FIRST

The primary objectives of Enfield Homes are to achieve the Decent Homes Standard for every home it manages

Background Papers

None.

MUNICIPAL YEAR 2009/2010 REPORT NO. **69B**

MEETING TITLE AND DATE:

CMB
 - 8th September 2009
 Cabinet
 - 16th September 2009
 Council
 - 23rd September 2009

REPORT OF:

Overview & Scrutiny Committee

Agenda - Part: 1	Item: 9
Subject:	
SCRUTINY ANNUAL WORK PROGRAMME 2009/10	
WARDS: None Specific	
Cabinet Members consulted: N/A Other Members consulted – Overview & Scrutiny Committee	

Contact officer and telephone number:

Mike Ahuja (Head of Corporate Scrutiny Services) Tel: 020 8379 4094/5044 e-mail: Mike.Ahuja@enfield.gov.uk

1. EXECUTIVE SUMMARY

- 1.1 This report and Appendix 1 sets out the annual work programme for the Council's Scrutiny Panels and Overview & Scrutiny Committee (OSC).
- 1.2 The Council's Constitution requires that the combined work programmes proposed by each Panel are adopted by Council (as an annual scrutiny work programme), on the recommendation of the Overview & Scrutiny Committee, following consultation with the Cabinet and Corporate Management Board (CMB).
- 1.3 CMB & Cabinet are being invited to comment on the Scrutiny Annual work programme recommended by OSC, prior to its consideration by Council.

2. RECOMMENDATIONS

- 2.1 CMB & Cabinet are requested to consider and comment on the combined Scrutiny Panel Work Programmes.
- 2.2 That Council formally adopt the Annual Scrutiny Work Programme 2009/10 (as detailed in Appendix 1) having considered any comments from CMB & Cabinet.

3. BACKGROUND

- 3.1 Enfield Council has a successful scrutiny function with examples of strong community engagement and tangible challenges to the Council's Executive. This continues to be recognised nationally with Enfield being cited as one of ten national hallmarks by the Home Office for effective partnership working in relation to its Crime & Safety scrutiny function. Whilst there are no national indicators for scrutiny, Enfield has developed its own scrutiny evaluation framework and tracking system to monitor progress being made against the implementation of scrutiny recommendations. The results from both of these systems are reported to OSC annually for monitoring purposes and to assist members in the ongoing organisation and development of the scrutiny function.
- 3.2 Enfield has adopted a mixed thematic & functional scrutiny structure with an Overview & Scrutiny Committee (OSC) established to manage the overall function and Scrutiny Panels. In July 2009 Council also agreed to establish an additional standing Scrutiny Panel, with a remit focussed around Place Shaping and Enterprise. This is due to commence meeting in September 2009.
- 3.3. As a result of government legislation introduced during 2007/08 new powers have also been introduced that give scrutiny more power to hold a wider range of the Council's key external strategic partners to account. The aim behind the new powers is to increase local democratic accountability of key public services. In addition the Councillor Call for Action has also now been introduced, which provides members with an opportunity to raise local issues via scrutiny when other methods of resolution have been exhausted.
- 3.4 The areas covered by each of the Council's Scrutiny Panels are as follows:

Scrutiny Panel	Chairman	Vice-Chairman
Overview and Scrutiny	Councillor Prescott	Councillor Pearce
Adult Social Services	Councillor McCannah	Councillor G.Savva
Children's Services	Councillor Giladi	Councillor E. Hayward
Crime & Safety	Councillor R. Hayward	Councillor Stafford
Environment, Parks & Leisure	Councillor Prescott	Councillor Bond
Health	Councillor Pearce	Councillor During
Housing	Councillor Georgiou	Councillor Chamberlain
Place Shaping & Enterprise	To be notified	Councillor Goddard

- 3.5 The main role of OSC, alongside dealing with call-in, is to provide leadership and co-ordination of the Council's scrutiny function. A key function is to review the combined annual work programmes produced by each panel in order to:
- ensure that the Council's scrutiny function is achieving its overall purpose and each Panel's time is being efficiently and effectively used;
 - ensure that the overall work programme is realistic, focussed and well balanced;

- effectively co-ordinate and manage the allocation of resources between Panels to support the scrutiny function and individual reviews;
- identify and address any gaps or overlaps between the individual Panel work programmes and any potential for joint working; and
- approve for adoption by Council, following consultation with CMB & Cabinet, an overall annual scrutiny work programme;

3.6 The annual scrutiny work programme has, as in previous years, been based on a combination of the individual work programmes produced by OSC and each Panel for 2009/10. The individual Panel work programmes (with the exception of Place Shaping & Enterprise, which is still to commence meeting) have been collated and attached as Appendix 1. CMB, Cabinet and Council are asked to note that:

- a. in order to enhance the planning and development of scrutiny work programmes:
 - an induction event was held in May 2009 for Scrutiny Chairman & Vice-Chairman, to provide an outline of the key issues and criteria needing to be taken into account when planning and setting scrutiny work programmes.
 - Members also received an update from Ed Hammond (Senior Policy Advisor – Centre for Public Scrutiny) on implementation of the new powers for scrutiny contained within the Police & Justice Act 2006 and Local Government & Public Involvement in Health Act 2007, including Councillor Call for Action, as well as the proposals likely to impact on scrutiny within the Local Democracy Bill.
 - Following the induction event each Panel then held a work programme planning workshop to formulate their programmes for 2009/10;
- b. In order to ensure the most effective use of officer support and member time each Panel will again be looking to limit the number of detailed reviews being undertaken at any one time to two;
- c. The work programme from the Place Shaping and Enterprise Scrutiny Panel has not been included, as the Panel has still to hold its first meeting. Once approved the work programme will be included within the annual scrutiny programme of work;
- d. Each of the work programmes will need to be treated with a degree of flexibility as Panels may amend some of the work they have initially identified as their work programmes develop and scopes for each review are finalised;
- e. The individual work programmes will be subject to ongoing development and continuous review by each Scrutiny Panel.

4. REVIEW OF PANEL WORK PROGRAMMES

4.1 OSC (22 July 2009) undertook a review of the combined Panel work programmes and agreed to recommend these as the basis of the 2009/10 annual scrutiny work programme to Council, with the Place Shaping and Enterprise programme to be included, once approved.

- 4.2 Key issues which OSC focussed upon, as part of their work programme review, included:
- a. the overall size and number of items on the Panel work programmes;
 - b. areas of duplication and potential for joint working between Panels;
 - c. the attempts being made to prioritise individual work programmes to ensure that they remained realistic and manageable in terms of the resources available to support them.
- 4.3 In reviewing the work programmes for 2009/10, OSC highlighted the following issues:
- a. the potential impact arising from the introduction of Councillor Calls for Action and need for each Panel to maintain capacity within their work programmes to deal with any issues referred under the process;
 - b. the need to consider and manage any potential overlap between the work programmes from the existing Panels and programme developed by the Place Shaping and Enterprise Scrutiny Panel. Members also recognised there would be a need to coordinate and prioritise the support officer resources available to support the new Panel.
 - c. The need for each Scrutiny Panel to maintain a focus on the key outcomes and objectives being sought as a result of their reviews.
- 4.4 OSC has continued to recognise the importance of the scrutiny functions role in relation to the Council's performance management framework, which has been further enhanced as a result of the new powers contained within the Local Government & Public Involvement in Health Act. The scrutiny function will be looking to maintain its interest in delivery of Enfield's Local Area Agreement during 2009/10 as well as increasing its focus on activity being undertaken by the Enfield Strategic Partnership and around the Comprehensive Area Assessment. In developing these processes members are keen to look at ways in which scrutiny's involvement in the performance management framework can "add value" to the process and avoid duplicating any monitoring and performance management arrangements already in place.
- 4.5 As part of its management and co-ordination role OSC has recognised the need for each Panel to continue monitoring & prioritising their work to ensure that the members and officers involved in supporting each review have the capacity to undertake effective scrutiny. In addition OSC will continue to encourage Panels, where practical, to consider cross working on areas of potential overlap.

5. COMMENTS FROM CORPORATE MANAGEMENT BOARD & CABINET

- 5.1 CMB considered the annual scrutiny work programme at their meeting on 8 September 09. Whilst the engagement of Directors and Cabinet members in the individual panel work programme planning sessions at the start of the Municipal Year was welcomed, CMB were keen to encourage future consultation with them on the forward planning of work programmes at as early a stage as possible. The time constraints involved in this process were recognized, but it was felt earlier input from Directors would allow more

consideration to be given to the scheduling of reviews and support required from each Department.

- 5.2 CMB approved the annual programme of work but was also keen to:
- a. ensure the necessary links to the Comprehensive Area Assessment were clearly identified within the work programme; and
 - b. encourage a more structured approach towards the way in which Children's Health was being picked up by the scrutiny function.
- 5.3 Cabinet is also being invited to comment on the combined Panel Work Programmes at its meeting on 16 September 09. Any comments made by Cabinet will be reported to Council for consideration at the meeting.

6. REASONS FOR RECOMMENDATION

To comply with the requirements of the Council's Constitution.

7. ALTERNATIVE OPTIONS CONSIDERED

No other options have been considered as the Overview & Scrutiny Committee is required, under the Council's Constitution, to present an annual scrutiny work programme to Council for adoption.

8. DIRECTOR OF FINANCE AND CORPORATE RESOURCES COMMENTS

8.1 Finance

Any cost implications of undertaking the Scrutiny Panel work programmes, that cannot be met from within the existing budget allocated to scrutiny, will need to be addressed through the financial monitoring process and review of the medium term financial plan.

8.2 Legal

8.2.1 Section 21 of the Local Government Act 2000 requires principal local authorities to have at least one overview and scrutiny committee.

8.2.2 Its functions are to:

- review or scrutinise decisions or actions taken by the cabinet or any non-executive part of the council;
- make reports or recommendations to the Council or the Cabinet on any issue to do with the Council's functions; and
- recommend that any decision be re-considered

8.2.3 The Council's Constitution requires the reporting of the Annual Work Programme for approval.

8.3 Risk Management Implications

Under the terms of the Council's Constitution, Overview & Scrutiny Committee is required to recommend an annual programme of work for the scrutiny function to Council for consideration and adoption. Any risks relating to individual scrutiny reviews will be identified and assessed through the scrutiny review scoping process.

9. PERFORMANCE MANAGEMENT IMPLICATIONS

9.1 The key aims for the Council's scrutiny function include:

- to review & assess the delivery and performance of services provided by the Council (along with the Health Service and Safer Stronger Communities Board);
- to assist in the monitoring & development of Council policies and strategies;

9.2 The work programmes produced by each Panel are designed to reflect these aims and as such the work undertaken by the Council's scrutiny function has a significant role to play in the Council's performance management framework.

10. COMMUNITY IMPLICATIONS

Positive Impacts

The scrutiny process provides an opportunity for elected members of scrutiny panels, and members of the local community, to actively contribute towards reviewing the delivery, performance and development of public services provided to all residents of Enfield by the Council and its partners. The work to be undertaken by scrutiny, in this respect, over the next year has been set out within the Annual Scrutiny Work Programme recommended by Overview & Scrutiny Committee.

11. PUTTING ENFIELD FIRST

The work undertaken by Enfield's Scrutiny Panels can be seen to have an impact on all of the aims within Putting Enfield First:

- Aim 1 – A cleaner greener sustainable Enfield
- Aim 2 – Ensure every child matters and provide high quality education for all
- Aim 3 – A safer Enfield
- Aim 4 – A healthier Enfield where people are able to live independent lives.
- Aim 5 – Provide high quality and efficient services
- Aim 6 – Build prosperous, sustainable communities

Background Papers:

Report to Overview & Scrutiny Committee – 22 July 2009: Review of Scrutiny Panel Work Programmes 2009/10

APPENDIX 1

Scrutiny Panel Annual Work Programmes 2009/10

This page is intentionally left blank

OVERVIEW & SCRUTINY COMMITTEE: WORK PROGRAMME 2009/2010

WORK Programme	Lead Officer	22July09	17Sept09	3Nov09	21Jan10	11Mar10	22 April 10
Work Programme							
(a) Setting Overview & Scrutiny Annual Work Programme 2008/09	Mike Ahuja/James Kinsella	OSC work programme					
(b) Scrutiny Annual Work Programme 2009/010	Claire Johnson/James Kinsella	Review & approve work programme					
Scrutiny involvement in budget consultation process 2009/10	Mike Ahuja/James Kinsella			Commission arrangements & Debt write-off	BUDGET COMMISSION MEETING		
Performance Management							
(a) Comprehensive Area Assessment (CAA) – Place Survey	Mike Ahuja/Simon Tendeter						
(b) Local Area Agreement (LAA) - Annual Progress update on LAA delivery.	Mike Ahuja/Simon Tendeter		Annual Update				
(c) Local Strategic Partnership – to develop scrutiny links with LSP.	Mike Ahuja/Simon Tendeter						
Corporate Policy/Strategy							
(a) HR Strategy & Performance Indicators	Tim Strong/Mike Ahuja and Neil Rousell/Andrew Fraser			Annual monitoring of work programme & Apprentice Scheme	HR update		
• 6 monthly update on PI targets;							
• Annual monitoring update on Council work experience programme.							
(b) Access to Services: Corporate Communication Strategy	Kate Robertson		Update on YEP engagement				
(c) Audit Commission – Management of the Green Belt	Peter Cook	Final report		Progress update			

WORK (continued)	Lead Officer	22July09	17Sept09	3Nov09	21Jan10	11Mar10	22April10
Corporate Policy/Strategy (cont)							
(d) Use of Consultants – Review use and spend on consultants across Council.			scope				
(e) Equalities & Diversity Standard for Local Government – monitor implementation of new standard	Martin Garnar			Update			
Scrutiny Best Value Review							
(a) Scrutiny Evaluation Framework	Claire Johnson/James Kinsella		2008/09 assessment				
(b) Scrutiny Recommendations – Tracking System	Mike Ahuja		2008/09 monitoring update				
Local Democracy Bill New Scrutiny powers.	Mike Ahuja			Panel briefing			
Councillor Call for Action – as required during the year	Mike Ahuja/Sue Payne	(a) Broadlands Ave & Close (b) Keston Close					
Scrutiny Member Induction	James Kinsella/Mike Ahuja		Feedback 2009/10 session			Planning 2010/11 session	
Monitoring use of Urgency Procedures	James Kinsella			6 monthly monitoring update			6 monthly monitoring update
Call-In: Matters Arising			(a) Update on final decision (b) Additional info	(c) Update on shopmobility service: Enfield (d) Review feedback		(e) Feedback on staff consultation process	
(a) Revised communication strategy PFI street lighting contract – pilot results.	Gary Barnes						
(b) Albany School – consultation proposals	Jennifer Hill						
(c) Shopmobility – Enfield Town							
(d) Concessionary Travel Assessments							
(e) Extension of PRP (HAY grades)							
Scrutiny Annual Report 2008/09	Mike Ahuja/James Kinsella					Agree format & timetable	Outline Report

ADULT SOCIAL SERVICES SCRUTINY PANEL
WORK PROGRAMME - 2009/2010

Work Programme	Lead Officer	16 June 2009	29 September 2009	10 November 2009	12 January 2010	23 March 2010
Annual Items						
Setting Annual Work Programme 2008/9	Jayne Bott/ Mike Ahuja/ Linda Leith	Agreement of Work Programme				
Scrutiny Annual Report 2008/09	Linda Leith					Draft Annual Report 2009/10
Budget Consultation & Budget Commission	Mike Ahuja/ Linda Leith/ Finance				Budget Consultation Report	
Councillors Call for Action (CCfA)	Mike Ahuja/ Linda Leith /Jayne Bott					
Rolled Forward Monitoring Items From 2008/09 Municipal Year						
CQC (formally CSCI) - Annual Inspection Outcome (Monitoring Item)	Ray James				Provisional Care Quality Commission (CQC) Summary Report	
Recruitment & Retention of Qualified Social Workers & Managers (Monitoring Item)	Ray James/ Bindi Nagra			Update Report		
Social Services Income Collection and Debt	Joyce Webster/ Jeanne Edearn		Monitoring Report			Monitoring Report
Write-Offs (Monitoring Item - 6 monthly basis)						
Blue Badge Scheme	Andy Rollock					

Work Programme	Lead Officer	16 June 2009	29 September 2009	10 November 2009	12 January 2010	23 March 2010
New Monitoring Items						
New Home Meals Contract	Michael Sprosson	Update				
New Home Care Contract			Update			
Safeguarding Adults				Update		
Scrutiny Reviews to be Continued:-						
Accessibility and Acceptability of Mental Health Services	Mike Ahuja/ Linda Leith	Working Group to be Re-established				
New Scrutiny Reviews In 2009/10						
Personalisation of Care	Mike Ahuja/ Linda Leith	Full Panel or Working Group Review				
Modernisation of Services for Dementia - New Dual Registered Care Home	Mike Ahuja/ Linda Leith	Working Group to be Re-established				
Any Additional Items added During 2009/10						

NOTES:

1. The panel is asked to note that the work programme will be reviewed and updated at each meeting to enable members to record and monitor the progress of work being undertaken.
2. Barnet, Enfield & Haringey Joint Commissioning Strategy for Adult Mental Health Services – This strategy will be considered by a joint Health and Adult Social Services Scrutiny Panel meeting on 21 July 2009 at 7.30 pm.

End of Document

CHILDREN'S SERVICES SCRUTINY PANEL
WORK PROGRAMME 2009/2010

WORK	Lead Member, Support Officer & Panel Department Lead	9 July 09	1 Oct 09	15 Dec 09	1 Feb 10	19 April 10
Annual Work Programme		Agree work programme				Review year's work programme Report
Annual Report						
Budget	James Rolfe			Consultation		
Councillor Call for Action						
Working Groups						
Consistency/Attendance/Curriculum	Cllrs Giladi, Rohini, Jukes, Zinkin and Elaine Hayward, A Meniru, Claire Johnson Neil Rouseil					
Youth Engagement	Cllrs Goddard, Lamprecht, E Hayward, Jukes Linda Leith			Update		
Health Visitors – impact on early years' education	Cllr Giladi, E Hayward, K Anolue, McCannah, Claire Johnson		Final Report			
Under 18 Conceptions – Joint with Health Scrutiny Panel	Cllr Giladi, Goddard, Lamprecht, McCannah, Wilkinson, Rodin and Anolue Andrew Fraser, Claire Johnson, Stacey Gilmour and others	Verbal Update				
Corporate Parenting Role and Looked After Children	Due to start when one of the other working groups is complete.					
Small Scale Reviews/Briefings						
Primary School Places	Neil Rouseil	Report				
Extending YOFE Schemes	Lester Vaughan					
Safeguarding Children (including staffing issues)	Andrew Fraser					
Attainment of Children on Free School Meals and Free School Meal admin and take up	Neil Rouseil					

WORK	Lead Member, Support Officer & Panel Department Lead	9 July 09	1 Oct 09	15 Dec 09	1 Feb 10	19 April 10
14-19 Commissioning Plan and Curriculum (including staffing issues)	Neil Rouseell				Report	
Family Intervention Programme	Andrew Fraser					
Monitoring Issues						
LAA Targets	Helen Wilson	Report	Update N 118 and PPG 5,	Update	Update	Update
Children's Trust Board	Tracy Jenkins		Update		Update	
Adoption Performance	Andrew Fraser					Report
Fostering Performance	Andrew Fraser					Report
Children's Social Care Complaints - Annual Report	Lesley Morton		Report			
Recruitment and Retention of Children's Social Workers	Andrew Fraser			Update		
Youth Service Action Plan	Lester Vaughan		Report			
LSCB Annual Business Plan	Andrew Fraser		Report			
Monitoring recommendations from previous panel reviews	Councillors who were involved in these reviews					
LAA PE Target and Facilities	Cllrs Andrew and McGowan					Monitoring Report
Looked After Children	Cllrs Jon Kaye, Lamprecht and Anolue					Monitoring Report
Exclusions	Councillors Pipe, Brown, Andrew and Kaye		Monitoring Report			
Pupil Mobility – Impact on Attainment	Cllrs Goddard, Andrew and Kaye		Monitoring Report			
Early Years and Foundation Stage	E Hayward, K Anolue, V Giladi, Eve Stickler,		Monitoring plus Foundation Stage outcomes			
Children and Young Carers	Cllrs E Savva & J Buckland, C Whetstone (CYPP), L Weeks (PCT)		Monitoring Report			

CRIME & SAFETY SCRUTINY PANEL: WORK PROGRAMME 2009/2010

WORK	Lead Officer	Mon 6 July 09	Tues 15 Sept 09	Wed 9 Dec 09	Tues 9 Feb 10	Tues 20 Apr 10
Work Programme:						
Panel work programme 2009/10 – To consider and identify items for inclusion on the Panel work programme	Mike Ahuja/Alison Trew	Approve programme				
Scrutiny Reviews:						
Safer Transport Interchanges – To consider the way crime & safety issues are being addressed in relation to transport and main interchanges.	Alison Trew		Review Update & Safer Transport Unit			
Communication with Police & Response Times – to review current performance	Sue Payne & Supt Dave Osborn	Final Update				
Area Review – To review how issues relating to crime, anti-social behaviour and the overall appearance/safety of an area are being addressed (a) Fore Street Area Review; (b) North Circular Road/Telford Road and Green Lanes Area Review	Mike Ahuja/Sue Payne	Final update on outstanding actions- Fore Street Area Review & proposal for new Area Review	Report back on final actions			Final Report on Nith Circular Road, Telford Road & Green Lanes Area Review
Arrangements to tackle Domestic Violence – briefing on arrangements to tackle domestic violence	Sue Payne		Progress Update			
SSCB Partnership Plan & Strategic Priorities – To review and feed into the consultation process on development of the Plan and strategic priorities for 2010 – 13.	Mike Ahuja/Andrea Clemons			Progress Update	Face the Public Panel session	Review of 2010-2013 strategic priorities
SSCB: Enhancing Community Engagement – To review the extent of community engagement in the development of the SSCB strategic priorities.	Mike Ahuja/Andrea Clemons	To agree review arrangements		Progress Update		
Member Development:						
Fire & Rescue Service – Briefing on Service & key priorities/achievements.	Mike Ahuja/Sue Payne	Panel briefing	Housing Tower blocks – Fire Safety			
Corporate scrutiny functions::						
Budget consultation process 20010/11	Mike Ahuja/Alison Trew			To consider 2009/10 budget consultation proposals		
Scrutiny Annual Report 2008/09	Mike Ahuja/James Kinsella					
Councillor Call for Action	Mike Ahuja/Sue Payne					

This page is intentionally left blank

ENVIRONMENT PARKS AND LEISURE SCRUTINY PANEL
WORK PROGRAMME 2009/2010

WORK	Lead Member, Support Officer & Panel Department Lead	16 July 09	8 Sept 09	6 October 2009	2 Dec 09	1 March 10	28 April 10
Annual Programme	Andy Ellis	Agree work programme					
Budget Annual Report	James Rolfe Andy Ellis				Consultation		Agree draft report
Councillor Call for Action		Update	Reports on Broadlands Ave CPZ and Parking Restrictions Keston Close				
Working Groups							
Allotments	Mike Ahuja Penelope Williams Annette Dreblow Norman Ford/Chris Bond/Geoffrey Robinson		Agree final report				
Parking Enforcement including Footway Crossovers	Gary Barnes M Prescott/T Smith/ C Bond, R Taylor & C Rash		Report				
Friends of the Parks	Chris Bond, Annette Dreblow Norman Ford Donald McGowan,			Interim report to panel			
Reviews							
Parks and Open Spaces Strategy	Sue Foster			Report on strategy			
Safety Camera Partnership	Liam Mulrooney	Item – postponed			Report		
Traffic Management and 20 mph zones	Gary Barnes				Report		
Planning Enforcement	Bob Griffiths				Update for noting		
Wheellie bin pilot and Civic amenity site	Neil Issac						

WORK	Lead Member Support Officer & Panel Department Lead	16 July 09	8 Sept 09	6 October 2009	2 Dec 09	1 March 10	28 April 10
Cycling and Cycle Routes	Gary Barnes/Sue Foster						
Cost of leisure centre activities	Neil Rouseil	Verbal report on Shokk Gym					
Paving and Potholes	Gary Barnes						
Community Toilet Scheme							
Monitoring							
Trading Standards – Benchmarking against other authorities	Bob Griffiths	Briefing					Results of London wide Comprehensive benchmarking
Sustainability and Climate Change	Tracey Smith	Update					
Eco Detectives	Neil Issac	Report on visit			Update on Progress		
New River Loop	Trevor Williams						
PFI Street Lighting Contract	Gary Barnes	Update on progress					

**HEALTH SCRUTINY PANEL
WORK PROGRAMME - 2009/2010**

**Corporate Scrutiny Services – Sue Cripps/ Andy Ellis
Scrutiny Secretary – Jayne Bott**

WORK PROGRAMME	Lead Member, Support Officer & Panel Department Lead	Tuesday 21 July 2009	Thursday 22 October 2009	Tuesday 8 December 2009	Thursday 11 February 2010	Tuesday 27 April 2010
Annual Items						
Setting Annual Work Programme 2009/10	Sue Cripps/Andy Ellis/ Jayne Bott	To Agree Work Programme	Update	Update	Update	Update
Budget Consultation & Budget Commission	Sue Cripps/Andy Ellis/ Finance			Consultation Document		
Scrutiny Annual Report 2009/10	Sue Cripps/Andy Ellis					Draft Report
Care Quality Commission Annual Healthcheck 2009/10: Local NHS Trusts	Sue Cripps/Andy Ellis				Note: Informal Select Committee Style meeting to be arranged in March/April 2010	To receive the Panel's commentary on the Healthchecks
Councillor Call for Action	Sue Cripps/Andy Ellis					
Scrutiny Review Rolled Forward From 2008/9						
End of Life Care	Cllrs During & Hones			Final Report		
Monitoring Items Rolled Forward From 2008/09						
Breast Screening Service: Need to Increase Uptake	Cllr During & Hones Sue Cripps/Andy Ellis				NHS Response to Panel's Recommendations	
Implementation of Hyper-Stroke and Major Trauma Centres	Cllrs Pearce & Hones Sue Cripps	JOSC Report on Consultation				
Dental Health Assessment in Schools		Report				

WORK PROGRAMME	Lead Member, Support Officer & Panel Department Lead	Tuesday 21 July 2009	Thursday 22 October 2009	Tuesday 8 December 2009	Thursday 11 February 2010	Tuesday 27 April 2010
Primary Care Centres – Forest Green & Evergreen	Cllrs Pearce, Hones, Wilkinson		Update			
Parkinson's Disease - Nurse				Report		
Alcohol Worker – Chase Farm A&E	Sue Cripps/Andy Ellis		Report			
Barnet, Enfield & Haringey Mental Health Hospital Trust - Foundation Trust Status	Sue Cripps/Andy Ellis				Update	
North Middlesex University Hospital Trust - Foundation Trust Status	Sue Cripps/Andy Ellis				Update	
Barnet & Chase Farm Hospital Trust - Foundation Trust Status					Update	
Clinicenta Contract			Update			
Consultations						
Enfield Primary Care Strategy			Update Report Including Financial Position			
Liaising with NHS Trusts						
BCFHT	Cllrs Boast and Wilkinson					
NMUHT	Cllr Daring (Plus Cllr Headley from Adult Social Services Scrutiny Panel)					
BEH-MHT	Cllr Daring & Hones					
Enfield NHS	Cllrs Pearce, Hones and Wilkinson					

WORK PROGRAMME	Lead Member, Support Officer & Panel Department Lead	Tuesday 21 July 2009	Thursday 22 October 2009	Tuesday 8 December 2009	Thursday 11 February 2010	Tuesday 27 April 2010
Other Items						
New Local Area Agreement (LAA) Targets 2008-2011	Sue Cripps/Andy Ellis/Melissa McFadden					Report
Joint Scrutiny Reviews						
BEH Clinical Reconfiguration Plan Implementation Plan Joint Health, Children's & Adult Social Services Scrutiny Panels	Cllrs Pearce, Giladi and McCannah to form Working Group with Cllr Wilkinson & Rep from LINKS		Update	Update	Update	Update
Teenage Pregnancy Children's Scrutiny Panel is leading on this review.	Cllrs Lamprecht & Wilkinson nominated representatives from Health Scrutiny Panel					Report
Joint Consultations						
Barnet, Enfield & Haringey Joint Commissioning Strategy for Adult Mental Health Services		Joint Health & Adult Social Services Scrutiny Panel at 7.30pm on 21 July 2009				

Note: Joint Health & Adult Social Services Scrutiny Panel Meeting held on 21 July 2009 to discuss Barnet, Enfield & Haringey Joint Commissioning Strategy for Adult Mental Health Services.

This page is intentionally left blank

HOUSING SCRUTINY PANEL
WORK PROGRAMME 2009/2010

WORK	Officer/ Member	8 July 09	9 Sept 09	17 Nov 09	14 Jan 10	10 Mar 10
Setting the Work Programme						
Annual report	Colin Pullen					Report
Enfield Homes Inspection	Bob Heapy	Update				
Enfield Homes customer service - first point of contact & tenant satisfaction	Monica Singh/ Cllr Chamberlain			Review		
Enfield Homes Performance monitoring	Bob Heapy	Review	Report			
Tenant involvement	Bob Heapy	Report	Update	Update		
CHP's						
Repairs & Maint-e service	Bob Heapy		Report	Update		Report
Leaseholder Charges	Bob Heapy					
Temporary accommodation	Sally McTernan Cllrs Brown/ Dey				Report	
Derelict Housing back to use	Cllrs Brown & Georgiou, Sally McTernan					Report
Transport for London North Circular Road	Cllr Georgiou Darren Welsh			Review		
Place Shaping – Sustainability / Social Housing	Darren Welsh			Review		
Ponders End Meridian						
New Southgate						
Estate Renewal / Modelling plan / Assessing Council Estates	Cllrs Chamberlain & Zinkin				Review	
Ladderswood	Darren Welsh					

WORK	Officer/ Member	8 July 09	9 Sept 09	17 Nov 09	14 Jan 10	10 Mar 10
Community Halls	Maria Jennings			Report		
Supporting People strategies, preventing homelessness - Finances & Outcomes	Sally McTernan			Report		
Heating Review / Energy Review	Darren Welsh			Report		
Housing Benefit System	Stuart Dennison					Report
Overcrowding	Sally McTernan					Report
Enfield's Housing Market	Darren Welsh		Report			
Housing Viability Study	Darren Welsh			Report		
Budget Consultation	Darren Welsh				Report	
Rent Setting 2009/10	Darren Welsh				Report	
Private Sector Housing	Sally McTernan					
Performance Monitoring	Darren Welsh					
Councillor call for action	Colin Pullen					

MUNICIPAL YEAR 2009/2010 REPORT NO. 84

MEETING TITLE AND DATE:
Council 23rd September
2009

REPORT OF:
 Director of Environment &
 Street Scene

Contact officer and telephone number:

Gary Barnes 0208 379 3600

E mail: gary.barnes@enfield.gov.uk

Agenda – Part:1	Item: 10
Subject: Environment and Street Scene Additional Capital and Revenue Allocations	
Wards: All	
Cabinet Member consulted: Councillor Terrence Neville	

1. EXECUTIVE SUMMARY

This report proposes the release of additional capital and one off revenue funding to allow improvements to services identified by residents and officers as priority areas.

2. RECOMMENDATIONS

- 2.1 That Council release the capital and one off revenue funding to the sum of £1.5million to undertake improvements to services as detailed in paragraph 3.7 of this report.
- 2.2 That delegated authority is given to the Cabinet Member for Environment and Street Scene to agree specific highways and borough gateway schemes up to the value of £800k.

3. BACKGROUND

- 3.1 The Environment and Street Scene Department (ESS) are responsible for the provision of many key public realm related services provided by the Council.
- 3.2 The Council undertakes regular resident surveys to assess the performance of the Council in relation to its services and uses this information to manage performance, improve customer service and target resources.
- 3.3 Recent survey results have shown that residents would support further investment in the following services:-
- The borough's road network
 - Management of litter and fly-tipping
 - Greening of the highway network
- 3.4 In addition to these areas officers have identified a number of other improvements and budget pressures including further gateway and highway improvements. Specific schemes will be finalised and agreed with the Cabinet Member.
- 3.5 Two further areas of work have also been identified by officers as requiring further investment; the first relates to the repair to a bridge structure, which was recently struck by an unidentified vehicle; The second is the need to complete a comprehensive survey of the council's tree stock. Over the past year, detailed information on our highway trees has been updated to ensure our management plans are effective. However, there is now a need to ensure all our remaining trees are surveyed and management plans are up to date.
- 3.6 Members are asked to approve the release of an additional £1.5million of capital and one off revenue resources to enable ESS to target specific projects to deliver improved services in the areas identified by residents as their priorities and other key projects identified by officers.
- 3.7 It is proposed that the additional funding identified above should be targeted in the following areas:
- Alley gating projects £170k
 - Installation of additional litter and recycling bins £180k
 - Additional highway tree planting £150k
 - Additional gateway and highway improvements £800k
 - Bridge structure repairs £100k
 - Surveying of non highway council owned trees £100k

4. ALTERNATIVE OPTIONS CONSIDERED

The alternative option considered was to continue with the current level of expenditure, which would then not allow the Department to deliver the service improvements, outlined in paragraph 3 of this report.

5. REASONS FOR RECOMMENDATIONS

To enable ESS to deliver a higher level of service in areas that residents have identified as a high priority, continue to improve our public realm and to ensure effective management plans are in place for borough trees.

6. COMMENTS OF THE DIRECTOR OF FINANCE AND CORPORATE RESOURCES AND OTHER DEPARTMENTS

6.1 Financial Implications

Since the amount of additional capital expenditure proposed exceeds £500,000, the decision to add this to the Capital Programme will need to be made by Council. There are sufficient resources within the General Fund Capital Reserve to fund the proposed expenditure.

With the exception of the tree survey work, which is one off revenue, the additional funding requested is capital. Should the tree survey program identify further revenue requirements, these matters will be included within next year's MTFS process.

Any individual highways schemes will be subject to the usual prioritisation, evaluation, delegated authority reporting and procurement processes.

6.2 Risk Management Implications

There are no specific risk management implications other than the ability of services to deliver the agreed additional programme of work.

6.3 Legal Implications

Under the Local Government Act, every local authority has powers to do anything which they consider is likely to promote the economic, social or environmental well being of their area. The recommendations within this report are a correct use of these powers.

6.4 Property Implications

None

7. PERFORMANCE MANAGEMENT IMPLICATIONS

The additional resources will enable ESS to provide additional services that residents, through resident surveys, have identified as priorities to improving resident perceptions of their local area.

8. COMMUNITY IMPLICATIONS

There are no specific community implications

9. EQUALITY IMPACT ASSESSMENT

Corporate advice has been sought in regard to equalities and an agreement has been reached that, on this occasion, an equalities impact assessment is not necessary.

10. PUTTING ENFIELD FIRST

The additional resources will enable ESS to deliver priorities identified within the Putting Enfield First of a Cleaner, Greener, Sustainable Enfield,

Background Papers

COUNCILLORS' QUESTIONS
23 SEPTEMBER 2009

Question 1 from Councillor Lamprecht to Councillor Vince, Cabinet Member for Education and Children's Services:

"Will the Cabinet Member for Education please inform the Council of the GCSE and A Level results for Enfield that were published earlier in August?"

Response from Councillor Vince:

"As Members will have seen from reports in the local press Enfield students have performed extremely well in GCSE and A levels this year. The best ever GCSE results have been achieved this year. At GCSE the 5+A*-C measure has improved again by 8.8% pts to 67.2%. This continues the upward trend shown over recent years giving an overall improvement of 15.5% over the last four years (2005-2009). The new national performance indicator (NI75 5A*-C, including English and Mathematics) has also improved from 48% pts to 50.4% pts, a modest but significant increase of 2.4%. The results are provisional and may change but this is, by anyone's standard, an extremely good set of results. National comparison figures will be released later in the year.

At A level pupils achievements also matched the best results ever in Enfield. The provisional pass rate was 96.5% which is broadly similar to last year (96.6%). Encouragingly, 28.8% of students achieved grade A, which is above the provisional national figure of 26.7%. Enfield has therefore had a very good year. The 'points per entry' measure also showed an excellent improvement on last year with a 15.4% increase, from 203.6 to 219. Again this is the highest ever score achieved.

There is no doubt that these results are due to the hard work and determination of our students and the dedication of teachers. I am sure Members would wish to join me in congratulating our young people and their teachers on these excellent results. These results highlight once again the excellent work that is being done by our schools, the School Improvement Service and Governors to raise standards for all pupils in our schools. However, we are not complacent and we will continue to challenge our schools, to match our ever increasing expectations for the young people of Enfield.

I commend these results to you."

Question 2 from Councillor Rodin to Councillor Lavender Deputy Leader of the Council:

"In response to my comment in the Evening Standard of 21 August that there is the first Black Conservative Councillor in Enfield, you pointed out on the paper's blog "Candidates who happen to be black have stood for the

Conservative Party in Enfield in seats previously held by the Conservatives, but regrettably have failed to get elected ". Can Councillor Lavender give the Council details of the elections, wards and candidates that he was referring to?

Response from Councillor Lavender:

"We do not record the ethnicity of candidates in our records. Therefore I cannot confirm whether what follows is an exhaustive list. However I can provide sufficient information from my own knowledge to evidence the claims made in the blog in their entirety.

In 2006 Sarah Macdonald stood for the Conservative Party in Jubilee Ward and polled 1,431 votes. Although not elected she polled 48 more votes than the late Chris Andrew had polled in 2002, when he did get elected for that ward.

Amos Charles stood for the Conservative Party in Edmonton Green Ward in 2002 and polled 579 votes. He stood again in Edmonton Green Ward for the Conservative Party in 2006 and polled 978 votes.

Joe Smith also stood for the Conservative Party in Edmonton Green Ward in 2002 and polled 538 votes.

Malake Fessehazion polled 778 votes when he stood for the Conservative Party in Upper Edmonton in 2006. The Upper Edmonton ward comprises part of the old Angel and part of the old Weir Hall wards. Angel ward has in the past returned a Conservative councillor."

Question 3 from Councillor Boast to Councillor Neville, Cabinet Member for Environment and Street Scene:

"Does Councillor Neville share my concern at the risk of injury, particularly to the elderly or infirm, from paving stones that have risen above the level of adjacent paving stones? If so, what is he doing about it? In particular, how much is the council spending on (a) repairs to paving stones and (b) renewal of stretches of paving and how does this compare with the expenditure on these items by the previous administration?"

Response from Councillor Neville:

"I m grateful to Councillor Boast for putting this question down, as I know the subject matter has formed the basis of an article in the July/August edition of "Enfield Over 50s".

I can tell the council that I do indeed share Councillor Boast's concern about the risk of injury to all our residents caused by uneven and badly broken paving stones. It has been a subject dear to my heart since I became Cabinet Member in 2002 and because of that I have been pleased to bring to the

cabinet each year since then a major programme of pavements renewal and an increasing maintenance budget for day to day repairs.

Since 2002, 85,700 yards (48.71 miles) of pavement have been renewed out of a total of 722miles. We have spent in excess of £15.75m over that time. Notwithstanding this historically major expenditure on the borough's pavements, there is alas still much to do and sadly we are unable to eliminate the risk of further trip accidents.

What I can say however, is that we inherited a situation where the previous Labour administration had spent virtually nothing on pavement renewal throughout their eight year period of office, which significantly contributed to the decline of borough pavements. It is reasonable to suppose that if they had continued in office the situation would have been very much worse today than it is. I can also say that this administration is committed to continued spending on pavement and carriageway renewal.”

Question 4 from Councillor Goddard to Councillor Prescott, Chairman of Overview and Scrutiny:

“Can Councillor Prescott inform Council of the date of the first meeting of the Place Shaping Scrutiny Panel?”

Response from Councillor Prescott:

“The first date for the place shaping scrutiny panel will be set following the appointment of the conservative members and the chairman, It will follow the effective process of the panel being briefed by the Director and Cabinet Member on the key issues and current work in the arena of place shaping. All scrutiny panels use this meeting to set their work programme, and this follows standard procedure.”

Question 5 from Councillor R Hayward to Councillor Neville, Cabinet Member for Environment and Street Scene:

“Would Councillor Neville inform the Council what action he is taking to combat fraudulent use of disabled parking badges (blue badges)?”

Response from Councillor Neville:

“Enfield council has appointed a blue badge team in a bid to investigate perceived misuse of disabled badges in the borough. The last British Crime Survey figures showed a 16% increase in fraud and forgery with the Department of Transport saying at least 10% of blue badges were misused.

The team from the Blue Badge Fraud Initiative (BBFI) are working on reducing parking fraud from the theft or cloning of blue badges and misuse (family

members and friends using blue badges without the blue badge holder being present).

Since the operation started in June we have either issued summons or have pending court cases against 5 people, have confiscated 30 badges for misuse, impounded 12 vehicles and have a further 60 ongoing cases which include 18 potential prosecutions.”

Question 6 from Councillor Georgiou to Councillor Laban, Cabinet Member for Housing and Community Safety:

“Can Councillor Laban tell the Council how much money has the Labour Government awarded Enfield Council to tackle mortgage repossessions?”

Response from Councillor Laban:

“Enfield Council has received a one off grant of £85,000 towards assisting local residents, and has established a small service in partnership with the Citizen’s Advice Bureau and Catalyst Housing Association as part of the Community Housing Service.

Currently 31 households in mortgage difficulties are being assisted with debt counselling and money advice, with four applications made for further financial assistance.

This is against a background of only 6 mortgage rescue cases across the whole country which have been through the complex and bureaucratic processes surrounding the scheme.”

Question 7 from Councillor Lamprecht to Councillor Vince, Cabinet Member for Education and Children’s Services:

“There has recently been a lot of publicity about safeguarding arrangements for children. Would Councillor Vince please advise what the position is in Enfield?”

Response from Councillor Vince:

“Enfield, as with most other local authorities has experienced a significant increase in referrals and workload since the case of ‘Baby Peter’; we are aware that most London authorities have reported an increase in referrals of between 30-40% since November 2008 – Enfield has experienced a sharper increase than this, possibly because of our close vicinity to Haringey, but may also be indicative of wider demographic changes that have taken place within the borough. The heightened awareness of child protection issues has resulted in more children being made the subject of child protection plans as well as an increase in the number of children in care. Since October 2008 activity levels have increased as follows;

80% increase in referrals

100% increase in initial assessments completed

39% more children with a child protection plan

16% increase in Looked After Children since October 2008

Senior officers from LBE took immediate steps to ensure there was sufficient staffing capacity to respond to this unprecedented increase in reported child abuse and have carefully examined the quality of practice in LBE, to ensure local children are adequately protected. During this period of high anxiety, I have been reassured about the effectiveness of our local position by

- An audit of child protection practice by academic experts in this field
- A mock unannounced inspection by ex inspectors
- An unannounced inspection of assessment services by Ofsted
- Direct observation of decision-making processes by the Risk Management Panel, chaired by the DCS.

Whilst I am delighted that the unstinting efforts of staff have been recognised by these quality assurance mechanisms, this is not an area of activity where anyone can afford any complacency. Staff remain vigilant, identifying and protecting children who are at risk of suffering serious harm and require the ongoing support of the council to continue to do this effectively.”

Question 8 from Councillor Rodin to Councillor Hurer, Cabinet Member for Finance and Resources:

“In his written reply to question 3 at the Council Meeting on 6 May 2009, Councillor Lavender wrote that a total of £1,940,000 had been allocated by the Council to the restoration of Broomfield House. As the Cabinet member for Finance and Resources would you not agree with me in pointing out that for this money to be spent would require further authorisation from the Council, and if you do not agree can you let the Council know why?”

Response from Councillor Hurer:

“Councillor Rodin, like a number of politicians within his party, appears confused between council publications and political publications and the respective roles of the party and the relevant organ of government. They are not the same. If the publication had been a council publication and it had stated that the council had decided to ring fence the monies as stated, then I agree there would have been a need for a decision to have been made by the council. Given the publication is a Conservative Party publication it states the views of the Conservative Party only. There is nothing misleading in it at all, since it states the view of the Conservative Party that the proceeds of the sale of assets in Palmers Green should be used to top up any shortfall required to

restore Broomfield House. That is something this administration is committed to and we will take this forward as part of this year's budget process, where it will be considered alongside all other priorities, the economic outlook and the prospects for public spending.

So far this administration has received criticism from you for the decision in principle by Boris Johnson and ourselves to support the restoration of Broomfield House for non-commercial purposes fully in conformity with the covenants. Something you and your party could never achieve.

We have had to suffer misleading and selective quotations from one of your colleagues at a previous council meeting deliberately misquoting the position of Boris Johnson, who, like us, remains committed to the regeneration of the area around the A406, again something your party could never achieve.

The Conservative Party is now being taken to task for its political stance, accurately set out by our agent Henry Lamprecht, of ring fencing the proceeds of the sale of Palmers Green assets, for the people of Palmers Green. “

Question 9 from Councillor Barker to Councillor Lavender, Cabinet Member for Place Shaping and Enterprise:

“Will Councillor Lavender confirm the circumstances surrounding the theft of the commemorative plaques in the remembrance garden in Broomfield Park and any steps being undertaken for their replacement?”

Response from Councillor Lavender:

“At some time during the evening of the 13 of August some eight large metal commemorative plaques were stolen from the Memorial Garden in Broomfield Park.

The Memorial Garden is locked at around dusk everyday, as part of the routine parks security process. Nothing untoward was noticed that evening.

Subsequent to the theft, the LBE Parks Police have conducted extra patrols, and Metropolitan Police are conducting a full investigation.

The Council has offered a reward of £5,000 for the safe return of the plaques and information leading to the successful prosecution of the thieves, but so far there has been no fruitful lead.

The process of replacing the plaques is underway and everything is currently progressing well, and all names previously on the memorial plaques, have now been confirmed by the Imperial War Museum.”

Question 10 from Councillor Rodin to Councillor Hurer, Cabinet Member for Finance and Resources:

“In a Conservative Party leaflet recently distributed in the Palmers Green area, it states that any money realised by the sale of Southgate Town Hall will be used for the restoration of Broomfield House. Will Councillor Hurer inform the Council when this decision was taken either by the Council collectively or under delegated authority, and state the decision reference, or if as I suspect no such decision has in fact been taken, will he join with me in condemning this misleading political propaganda put out under the imprint of his colleague, Councillor Lamprecht?”

Response from Councillor Hurer:

“In relation to question 10, we can confirm that, to our knowledge, the sale of Southgate Town Hall has not been linked to Broomfield Park in a Finance context.”

Question 11 from Councillor Dey to Councillor Kaye, Cabinet Member for Leisure, Culture, Olympics and Voluntary Sector:

“Would Councillor Kaye tell us what facilities there are for local community groups to meet up in Palmers Green and what there could be in the future?”

Response from Councillor Kaye:

“For many years now we've had countless enquiries from local community groups to hold meetings in the area and sadly we've not had the provision to be able to assist. Currently, librarians have to direct enquiries to other libraries where such rooms do exist in Edmonton, the new Fore Street Library or Oakwood library but clearly that is not satisfactory for local people and a major town like Palmers Green ought to have a similar facility. That is why, central to our plans to re-locate Palmers Green Library, will be the provision of a meeting room, which can be hired by local people.”

Question 12 from Councillor Brett to Councillor Rye, Leader of the Council:

“Enfield's Fairtrade application is due to be renewed on 21st September. Can Councillor Rye let the Council whether or not fairtrade coffee is being offered at Council Meetings, as agreed in the original motion?”

Response from Councillor Rye:

“The Restaurant Manager, Clive Longman, has confirmed that Fairtrade tea and coffee is available in the staff restaurant and can be ordered for Council meetings.

Following the restaurant refurbishment and to coincide with the Enfield Fairtrade Steering Group seeking renewal of its Fairtrade status, we would ensure greater publicity and awareness of Fairtrade products, with posters, flyers and other promotional materials supplied gratis from the Fairtrade

Foundation. The Enfield Fairtrade Steering Group (EFSG) is now a properly constituted organisation and seeks to raise awareness of Fairtrade, monitor availability of Fairtrade products in Enfield retail and catering outlets and to encourage retailers and caterers to stock Fairtrade products. Currently over 20 places of worship in the borough have Fairtrade status, including the progressive synagogue, and over 40 places of worship overall, have a link to Fairtrade by using Fairtrade products, holding stalls or other connections. These include several CoE churches, a Hindu temple, mosques, United Reform Churches and Catholic churches. Further high profile events are being planned for Fairtrade fortnight in February/March 2010. There is a link to the EFSG form the Council's website with further information. “

Question 13 from Councillor Zinkin to Councillor Lavender, Deputy Leader:

“Can the Deputy Leader provide an update on what progress you have made with Transport for London and the Homes and Communities Agency to bring an end to the currently unacceptable situation of the 79 empty houses owned by TfL along the North Circular in Palmers Green, Southgate Green and Bowes?”

Response from Cllr Lavender:

“I am conscious that, when a question on this topic was asked at the Mayor for London's question time, that a member of the Labour party opposite deemed it fit to selectively quote only part of the answer given, in order to deliberately mislead.

I am grateful therefore for the opportunity given to repeat in full the answer to this question, which was asked of Jonathan Cornelius of TfL.

I am pleased to report that TfL and the London Borough of Enfield are close to concluding a proposal, which will look to bring forward the regeneration of this area. This will deal with not only the empty properties, but the entirety of TfL's surplus portfolio along the A406. I hope to be able to make a more formal announcement in the very near future.”

Question 14 from Georgiou to Councillor Rye, Leader of the Council:

“Will Councillor Rye inform the Council what action he and his colleagues have taken in response to the letter from the Shadow Communities Secretary, Caroline Spelman MP advising Conservative Councils to delay major commercial and housing developments?”

Response Councillor Rye:

“None whatsoever, for the simple reason that as Councillor Georgiou well knows, the guidance does not apply to London authorities. The Deputy Leader attended the London Congress hosted by Boris Johnson at Guildhall

on 3rd September at which this very issue was raised by the leader of Bexley. I understand that it was acknowledged there that the letter did not apply to London and that is my understanding, the understanding of the Mayor for London and the understanding of members of all parties at that congress.

The letter from Caroline Spelman was written in the context of the Conservative Party's policy of reviewing regional planning bodies and guidance to counter the Labour Party's intention to further rape the countryside by imposing artificial housing and development targets, in rural areas and the green belt.

This is good news for Enfield and for areas such as Edmonton and areas around the A406 which Councillor Georgiou himself represents. There is a clear distinction between the advisability of new build in the regions (which we reject) and the regeneration or existing urban areas (which we support). This administration and Boris Johnson remain committed to regenerating existing urban areas such as Edmonton and the A406 rather than seeing resources removed from London to meet regional housing targets. So should you.

Caroline Spelman has this administration's full support."

Question 15 from Councillor Jukes to Councillor Hurer, Cabinet Member for Finance

"Is Councillor Hurer able to give us an update with respect to our deposits with the Icelandic Banks?"

Response from Councillor Hurer:

"Early in October 2008, certain Icelandic Banks collapsed and the UK subsidiaries of the banks went into administration. The authority had £5m deposited in one of these institutions for one year with effect from 11th January 2008, namely the Heritable Bank. At the time the investment was made, the bank's credit rating was within the parameters set and within the Council's approved Treasury Management Strategy.

The Bank went into administration on 7th October 2008.

The administrator made an initial assessment that the assets (at book cost) of the bank matched their liabilities. The administrator expected that at least 70% to 80% of the investment would be recovered. Much would depend on the improvement in the property market.

The administrator made the first distribution in July 09, amounting to £839k (16.3%). A further provisional distribution of £515k (10%) has been announced. This is due to be made before the end of December 2009. Further distributions are planned for 2010 and 2011 with the final distribution due in 2012.

Members will be kept up to date with all developments.”

MUNICIPAL YEAR 2009/10 REPORT NO. **86**

MEETING TITLE AND DATE:
COUNCIL
- 23.9.09

REPORT OF:
Director of Finance and
Corporate
Resources

Contact Officer:
John Austin
020 8379 4094

AGENDA - PART: 1	ITEM: 15
SUBJECT: MEMBERSHIP OF COMMITTEES AND PANELS	

1. SUMMARY

To determine the constitution and political balance of the committees, joint committees and panels that have been set up for the discharge of the Council's functions, following the recent change in the political makeup of the Council.

2. RECOMMENDATIONS

2.1 That the seats be allocated to each political party, on the committees and boards to which Section 15 of the Local Government and Housing Act 1989 apply in accordance with the following proportions and the number of available seats.

Total number of available seats - 237

% of seats allocated to each Group -

- Conservative 53.97% (128 seats)
- Labour 42.86% (102 seats)
- Save Chase Farm 3.17% (7 seats).

2.2 In accordance with paragraph 3.3 of the report, Council resolves without dissent that the rules of political proportionality should not apply to the Adoption Panel, Fostering Panel and the Standards Committee.

3. BACKGROUND

3.1 Section 15 of the Local Government and Housing Act 1989 imposes a duty on Councils to review the representation of different political groups on bodies to which the Council makes appointments. The Act

requires that the review should be held at the Annual Meeting or as soon as practicable after that meeting or, for example, when the membership of the Council changes as a result of a by-election

3.2 The Act provides four principles concerning political representation that must be observed when conducting a review. The four principles are:-

- (a) That not all seats are allocated to the same political party.
- (b) That the political group with the majority of seats should have the majority of seats on each committee.
- (c) Subject to (a) and (b) that the total number of seats allocated to political groups on all committees (to which Section 15 of the Act applies), shall be in the same proportion as the total number of seats on the authority held by each political group.
- (d) Subject to (a) to (c) that the number of seats allocated to each political group on a committee (to which Section 15 of the Act applies), shall be the same as the proportion of the total number of seats on the authority held by each political group.

3.3 The fourth principle can be waived if the members of the Council agree with no member voting against. Where the fourth principle is waived the allocation of seats on the committee in question must still be included in the calculation as to the total number of seats held by each political group on all committees.

4. ALTERNATIVE OPTIONS CONSIDERED

4.1 The recommendations in this report are in accordance with section 15 of the Local Government & Housing Act 1989 and the Council is obliged to allocate its seats on a proportional basis in accordance with this legislation.

5. REASONS FOR RECOMMENDATIONS

5.1 See paragraph 4 above.

6. FINANCIAL IMPLICATIONS

6.1 There are no financial implications arising from the recommendations contained within this report.

7. LEGAL IMPLICATIONS

7.1 There is a specific duty imposed on the Council to review each year at the Annual meeting, or as soon as practicable thereafter, the representation of different political groups, or when the Council membership changes as a result of a by-election. The legislation

provides that the Council may make alternative arrangements to the 'proportionality' principles within this report only by a unanimous vote. However a political group may decide to offer a seat on a committee or panel to another political group. This does not affect the proportionality principles as it remains within the gift of that political group to determine how it wishes to exercise that discretion, if at all.

8. PUTTING ENFIELD FIRST

Aim 5(e) Provide effective community leadership and promote active citizenship involvement in decision making

Aim 5(g) Ensure the Council maintains strong corporate governance in line with more demanding legislative requirements

Background Papers

None.

This page is intentionally left blank

MEMBERS PROPORTIONALITY FOR MEETINGS

Title of Meeting	No. of Members	Conservative	Labour	SCF	Total %
		34 53.97%	27 42.86%	2 3.17%	63 100%
Overview & Scrutiny Committee	6	4	2		6
Childrens' Services Scrutiny Panel	9	5	4		9
Environment, Parks & Leisure Scrutiny Panel	9	5	4		9
Health Scrutiny Panel	9	5	3	1	9
Housing Scrutiny Panel	9	5	4		9
Crime and Safety Scrutiny Panel	9	5	3	1	9
Adult Social Services Scrutiny Panel	9	5	4		9
Place Shaping & Enterprise Scrutiny Committee	9	5	4		9
Enfield Leisure Centres Ltd., Scrutiny Commission	5	3	2		5
Health Care for London Joint Scrutiny Committee	2	1	1		2
Young Peoples Life Opportunities Scrutiny Commission	6	3	3		6
Standards Committee	6	3	3		6
Audit Committee	7	4	3		7
Planning Committee	15	8	6	1	15
Conservation Advisory Group	5	2	2	1	5
Governance Working Group	5	3	2		5
Green Belt Forum	5	2	2	1	5
Licensing Committee	15	8	7		15
Learning Difficulties Partnership Board	2	1	1		2
Joint Consultative Group for Teachers & Staff Forum	5	3	2		5
Member Governor Forum	5	3	2		5
Complaints Against Curriculum Panel	3	2	1		3
Admissions Forum	5	3	2		5
Secondary Tuition Centre	2	1	1		2
Schools Forum	1		1		1
Standing Advisory Council for Religious Education	4	2	2		4
Adoption Panel	1	0	1		1
Fostering Panel	2	1	1		2
Corporate Parenting Group	2	1	1		2
Appointment Panel	5	3	2		5
Edmonton Partnership Working Group	4	2	2		4
Electoral Review Panel	7	4	3		7
Pension Fund Board	7	4	3		7
Public Transport Consultative Group	11	5	5	1	11
Staff Appeals Panel	11	6	5		11
Tenant Participation Working Group	6	3	2	1	6
Tourism & Twinning Working Party	6	3	3		6
Housing Services Board	3	2	1		3
Enfield Council Working Group on the Olympic and Paralympics Games	5	3	2		5
TOTAL	237	128	102	7	237
Actual Percentage of Representation		54.01%	43.04%	2.95%	100%

This page is intentionally left blank